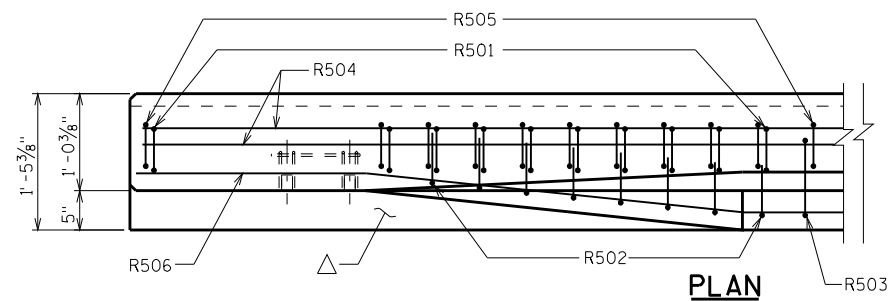
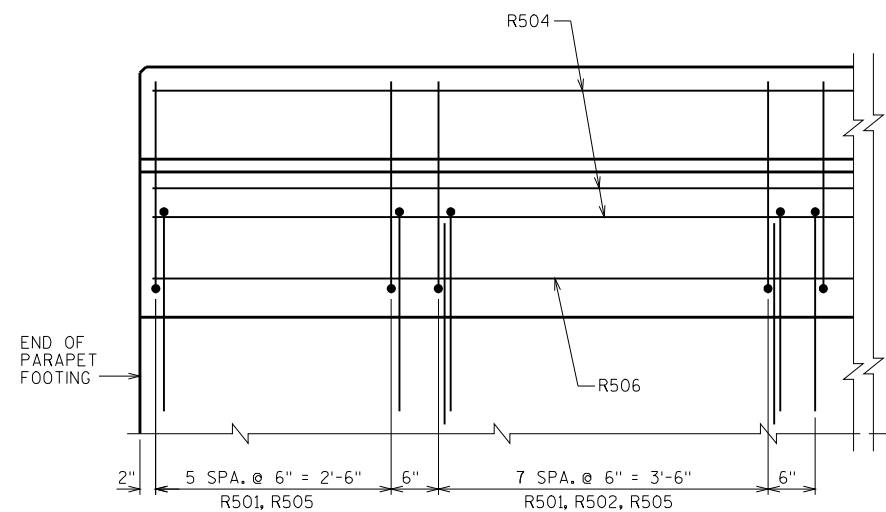


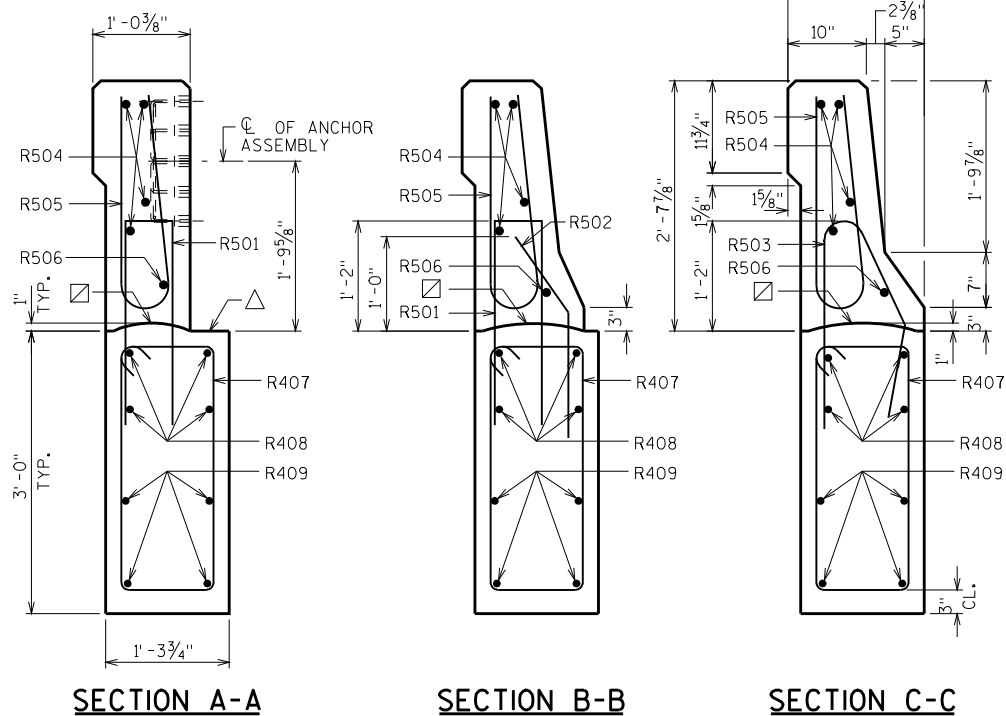
INSIDE ELEVATION OF PARAPET AND FOOTING
SHOWING FOOTING STEEL



PLAN



OUTSIDE ELEVATION OF PARAPET
SHOWING PARAPET STEEL

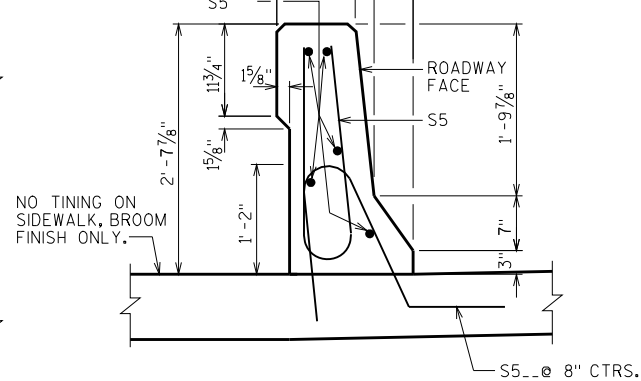
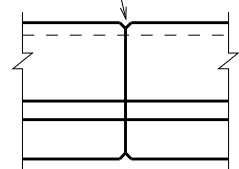


SECTION A-A

SECTION B-B

SECTION C-C

OPTIONAL CONSTRUCTION JOINTS IN THE PARAPETS MAY BE USED. RUN BAR REINF. THRU THE JOINT. LAP LONGIT. BARS A MIN. OF 1'-9". MIN. JOINT SPACING OF 80'-0". DEFINE CONST. JOINT WITH A 3/4" 'V' GROOVE.



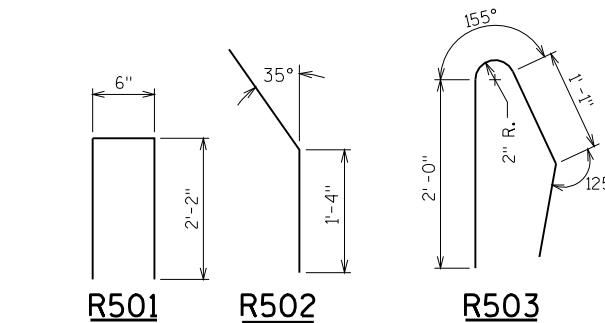
SECTION THRU PARAPET ON BRIDGE

PARAPET SHALL NOT BE ANCHORED WITH EPOXY ANCHORS. REINFORCEMENT MUST BE CAST-IN-PLACE.

BILL OF BARS

FOR ABUTMENT PARAPETS AND FOOTINGS.

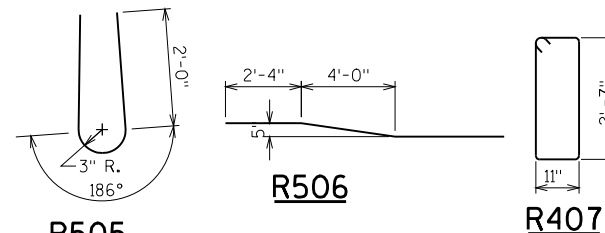
BAR MARK	COAT	ABUT.	ABUT.	LENGTH	BENT	BAR SERIES	LOCATION
R501	X	28	28	4-7	X		PARAPET VERT.
R502	X	16	16	2-4	X		PARAPET VERT.
R503	X			4-7	X		PARAPET VERT.
R504	X	8	8				PARAPET HORIZ.
R505	X			4-10	X		PARAPET VERT.
R506	X	2	2		X		PARAPET HORIZ.
R407	X			7-6	X		FOOTING VERT.
R408	X						FOOTING HORIZ.
R409	X						FOOTING HORIZ.



R501

R502

R503

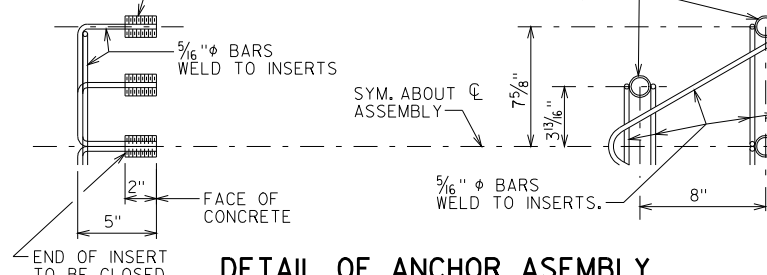


R505

R506

R407

THREADED INSERTS FOR 7/8" φ X 2" LONG GALVANIZED HEX HEAD CAP SCREWS. CAP SCREWS TO BE THREADED A MIN. OF 1/8" AND SHALL BE SUPPLIED, INCLUDING WASHERS, WITH ASSEMBLY. INSERTS TO BE THREADED A MINIMUM OF 1/4".



DETAIL OF ANCHOR ASSEMBLY

HEX HEAD CAP SCREWS & WASHERS TO BE GALVANIZED IN ACCORDANCE WITH AASHTO M232 CLASS C.

ASSEMBLY BID ITEM SHALL BE "ANCHOR ASSEMBLIES FOR STEEL PLATE BEAM GUARD", EACH.

NOTE:

BID ITEMS ON THIS SHEET TO BE INCLUDED WITH THE SUPER-STRUCTURE QUANTITIES.

☑ HORIZ. CONST. JOINT - STRIKE OFF AS SHOWN AND LEAVE ROUGH.

△ FINISH SURFACE NOT COVERED BY PARAPET SAME AS ROADWAY.

NO.	DATE	REVISION	BY

STATE OF WISCONSIN
DEPARTMENT OF TRANSPORTATION
STRUCTURES DESIGN SECTION

STRUCTURE

DRAWN BY: _____ PLANS CK'D: _____

SHEET

8

8

1.2345678