

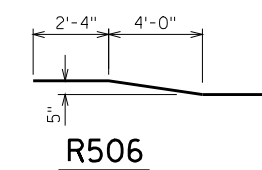
▲ LENGTH SHOWN FOR BAR IS AN AVERAGE LENGTH AND SHOULD ONLY BE USED FOR BAR WEIGHT CALCULATIONS. SEE BAR SERIES TABLE FOR ACTUAL LENGTHS.

BILL OF BARS FOR ABUTMENT PARAPETS

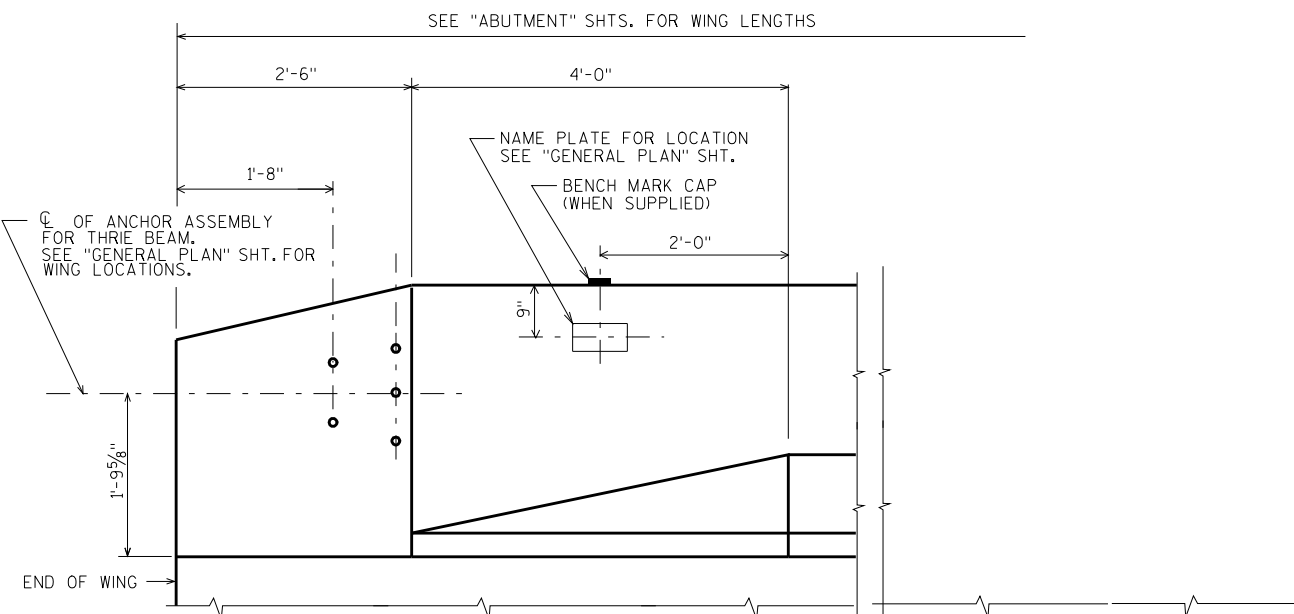
BAR MARK	COAT	ABUT.	ABUT.	LENGTH	BENT	BAR SERIES	LOCATION
R501	X			4-7	X		PARAPET VERT.
R502	X			2-4	X		PARAPET VERT.
R503	X			4-7	X		PARAPET VERT.
R804	X						PARAPET HORIZ.
R505	X			6-6	X		PARAPET VERT.
R506	X				X		PARAPET HORIZ.
R507	X			5-8	X	▲	PARAPET VERT.
R808	X				X		PARAPET HORIZ.
	X						
	X						
	X						

BAR SERIES TABLE

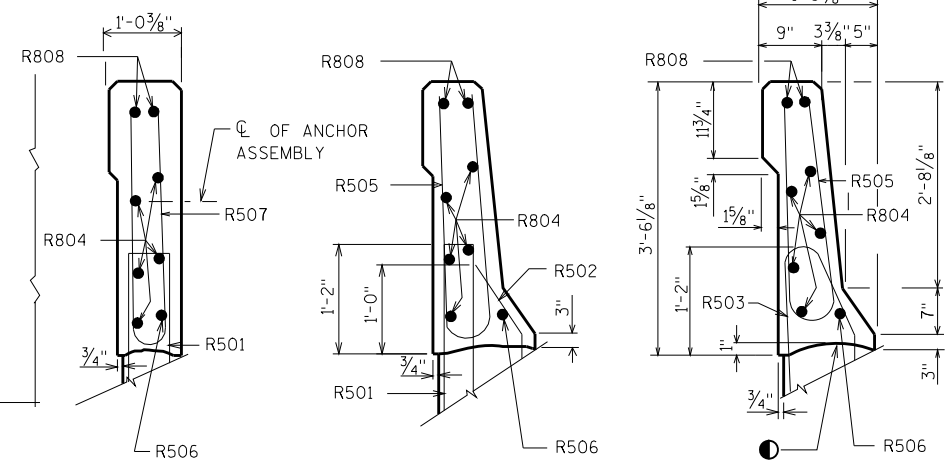
MARK	NO. REOD.	LENGTH
R507	4 SERIES OF 6	4-10 TO 6-6



R506



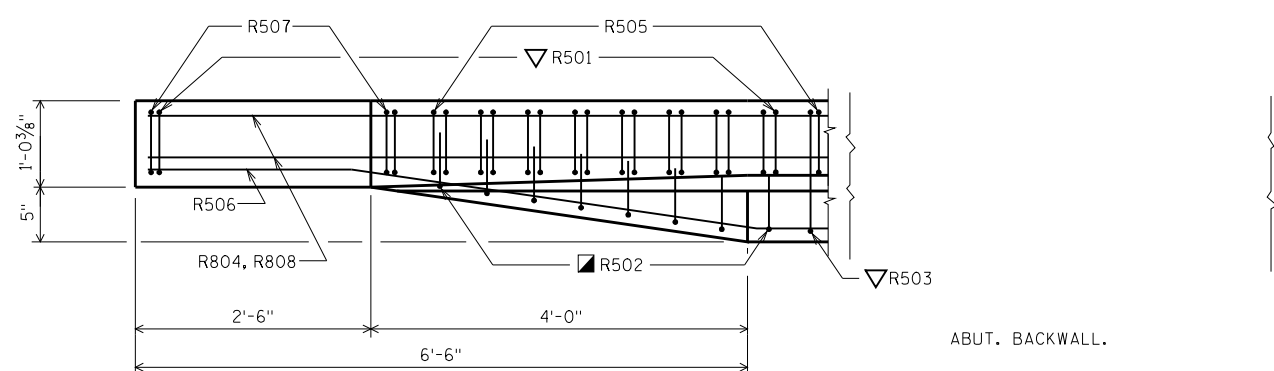
INSIDE ELEVATION



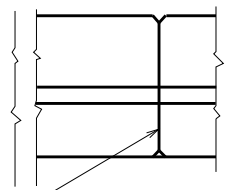
SECTION A

SECTION B

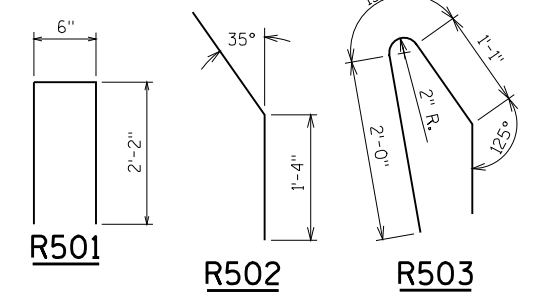
SECTION C



PLAN



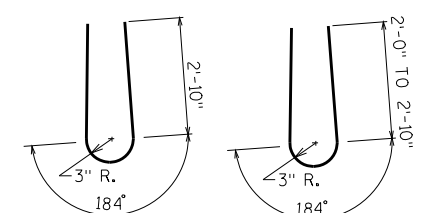
OPTIONAL CONSTRUCTION JOINTS IN THE PARAPETS MAY BE USED. RUN BAR REINF THRU THE JOINT. LAP LONGIT. BARS A MIN. OF 3'-5" MIN. JOINT SPACING OF 80'-0" DEFINE CONST. JOINT WITH A 3/4" V-GROOVE.



R501

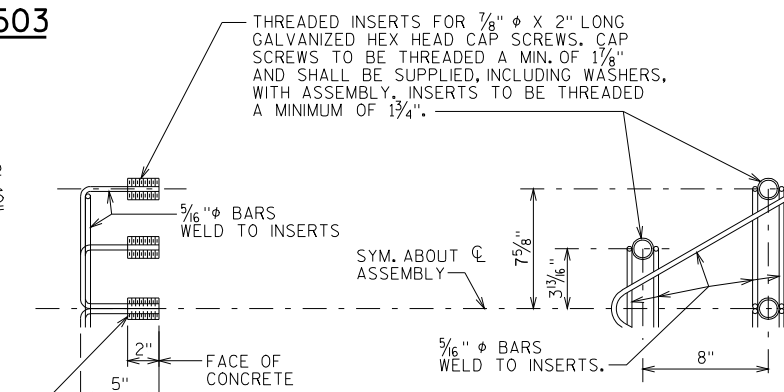
R502

R503



R505

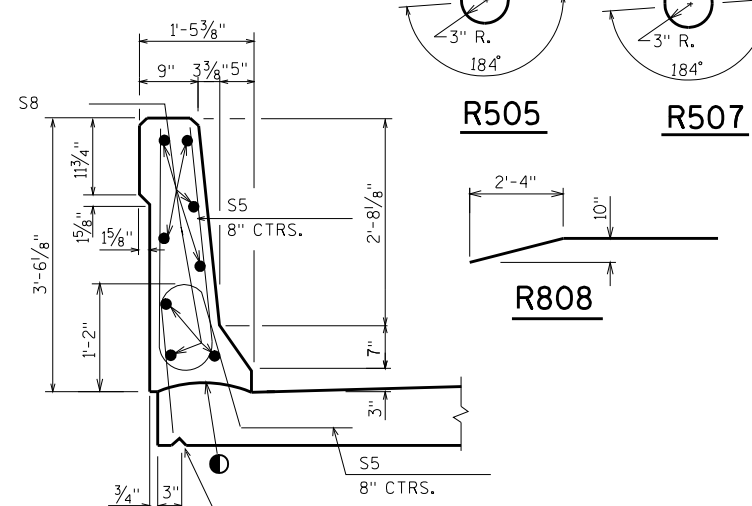
R507



DETAIL OF ANCHOR ASSEMBLY

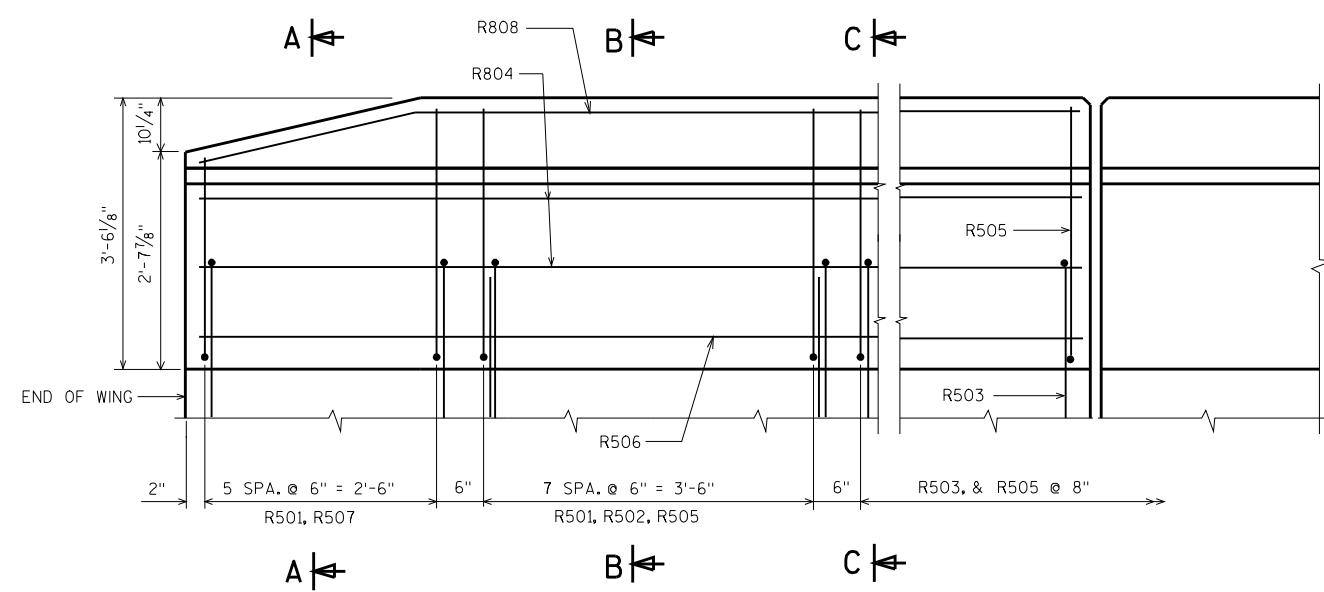
NOTE: HEX HEAD CAP SCREWS & WASHERS TO BE GALVANIZED IN ACCORDANCE WITH AASHTO M232 CLASS C.

ASSEMBLY SHALL BE BID ITEM "ANCHOR ASSEMBLIES FOR STEEL PLATE BEAM GUARD", EACH.



SECTION THRU PARAPET ON BRIDGE

- CONST. JOINT - STRIKE OFF AS SHOWN.
- R502 BARS MAY BE PLACED AFTER CONCRETE IS POURED BUT BEFORE INITIAL SET HAS TAKEN PLACE. USE CARE TO PLACE R502 BARS CORRECTLY ALONG TRANSITION OF PARAPET.
- ▽ R501 AND R503 BARS TO BE TIED TO WING STEEL BEFORE WING IS POURED.



OUTSIDE ELEVATION

NO.	DATE	REVISION	BY

STATE OF WISCONSIN
DEPARTMENT OF TRANSPORTATION
STRUCTURES DESIGN SECTION

STRUCTURE

DRAWN BY: _____ PLANS CK'D: _____

SLOPED FACE PARAPET "HF"

SHEET _____

8

8