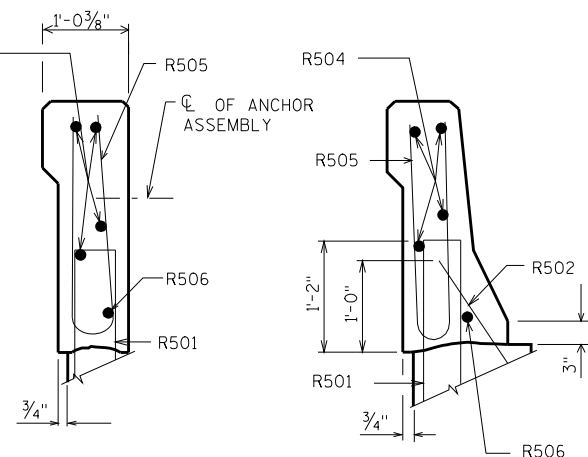


INSIDE ELEVATION

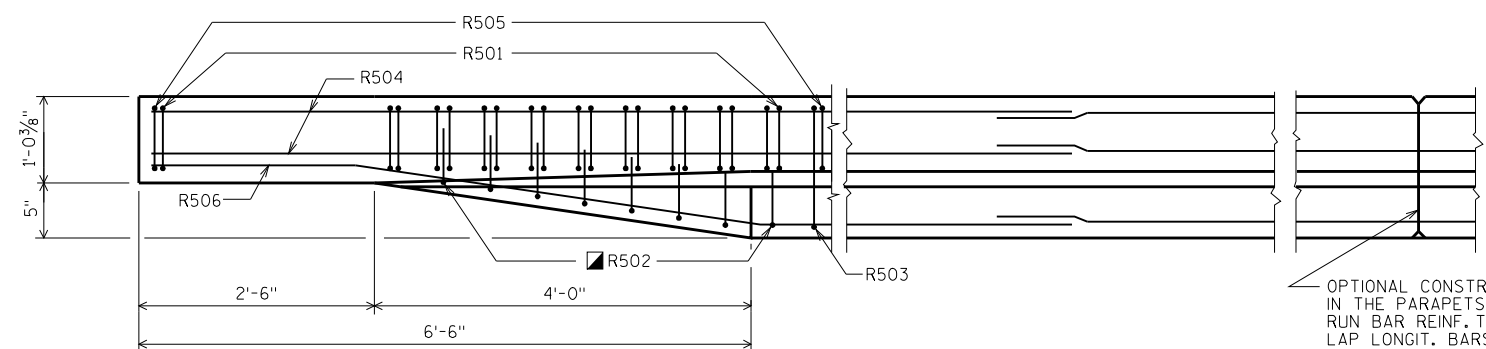


SECTION A

SECTION B

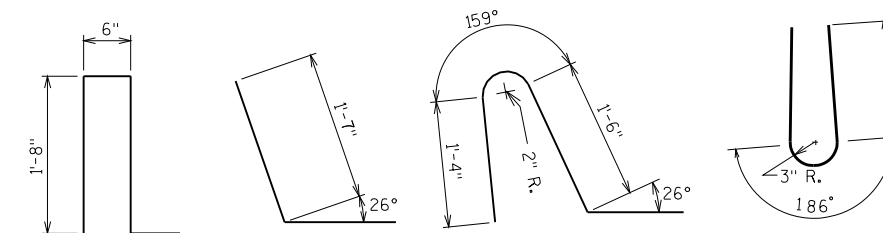
BILL OF BARS

BAR MARK	COAT	NO. REQ'D.	LENGTH	BENT	BAR SERIES	LOCATION
R501	X		4-5	X		PARAPET VERT.
R502	X		2-4	X		PARAPET VERT.
R503	X		4-2	X		PARAPET VERT.
R504	X					PARAPET HORIZ.
R505	X		4-10	X		PARAPET VERT.
R506	X			X		PARAPET HORIZ.



PLAN

OPTIONAL CONSTRUCTION JOINTS IN THE PARAPETS MAY BE USED. RUN BAR REINF. THRU THE JOINT. LAP LONGIT. BARS A MIN. OF 1'-9". MIN. JOINT SPACING OF 80'-0". DEFINE CONST. JOINT WITH A 3/4" 'V' GROOVE.

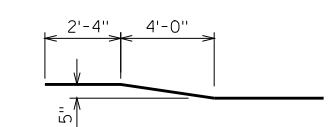


R501

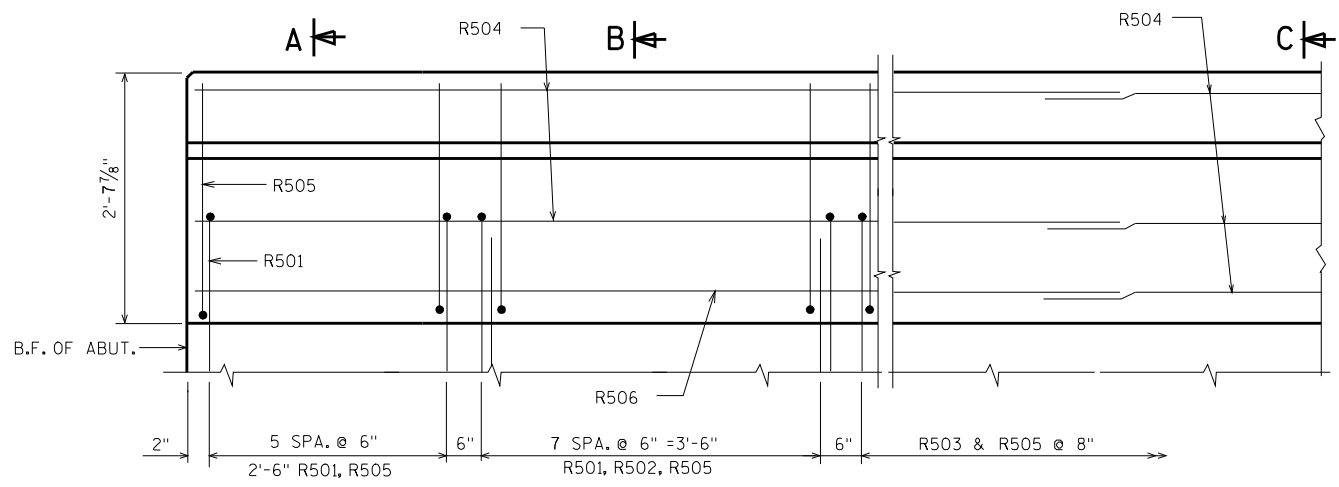
R502

R503

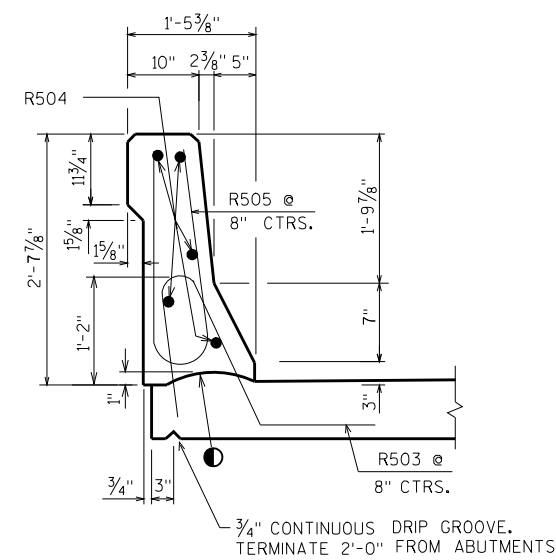
R505



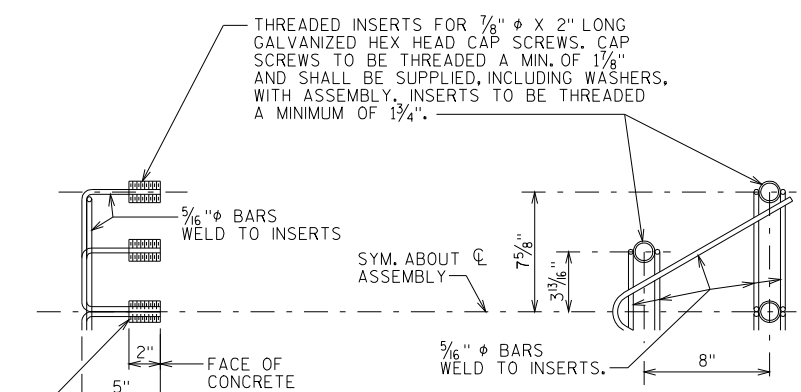
R506



OUTSIDE ELEVATION



SECTION C



DETAIL OF ANCHOR ASSEMBLY

NOTE: HEX HEAD CAP SCREWS & WASHERS TO BE GALVANIZED IN ACCORDANCE WITH AASHTO M232 CLASS C.

ASSEMBLY SHALL BE BID ITEM "ANCHOR ASSEMBLIES FOR STEEL PLATE BEAM GUARD", EACH.

● CONST. JOINT - STRIKE OFF AS SHOWN.

■ USE CARE TO PLACE R502 BARS CORRECTLY ALONG TRANSITION OF PARAPET.

NO.	DATE	REVISION	BY

STATE OF WISCONSIN
DEPARTMENT OF TRANSPORTATION
STRUCTURES DESIGN SECTION

STRUCTURE

DRAWN BY: _____ PLANS CK'D: _____

SLOPED FACE PARAPET LF

SHEET

8

8