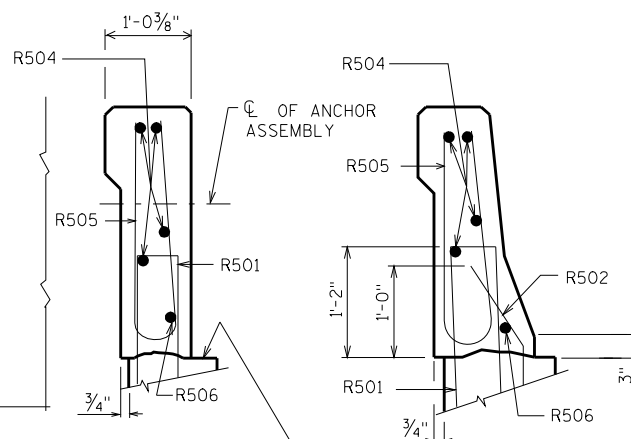


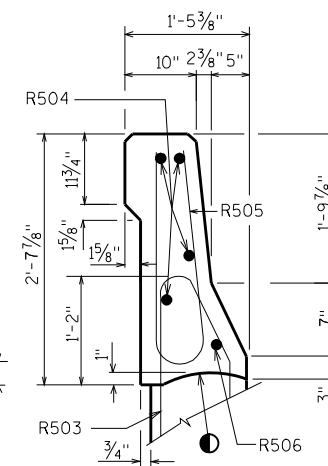
INSIDE ELEVATION



FINISH THE SURFACE NOT COVERED BY PARAPET THE SAME AS THE RDWY.

SECTION A

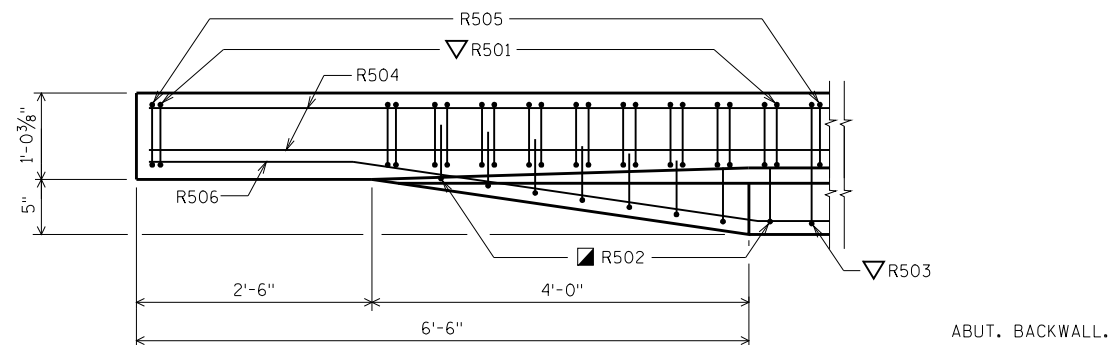
SECTION B



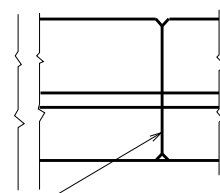
SECTION C

BILL OF BARS
FOR ABUTMENT PARAPETS

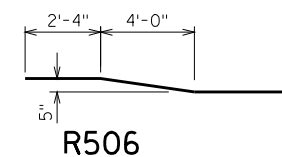
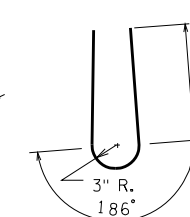
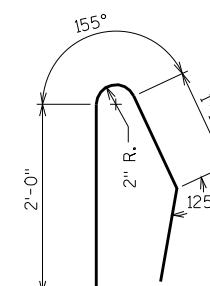
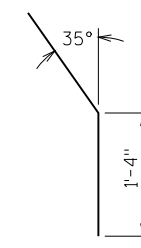
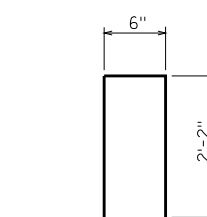
BAR MARK	COAT	ABUT.	ABUT.	LENGTH	BENT	BAR SERIES	LOCATION
R501	X			4-7	X		PARAPET VERT.
R502	X			2-4	X		PARAPET VERT.
R503	X			4-7	X		PARAPET VERT.
R504	X						PARAPET HORIZ.
R505	X			4-10	X		PARAPET VERT.
R506	X				X		PARAPET HORIZ.



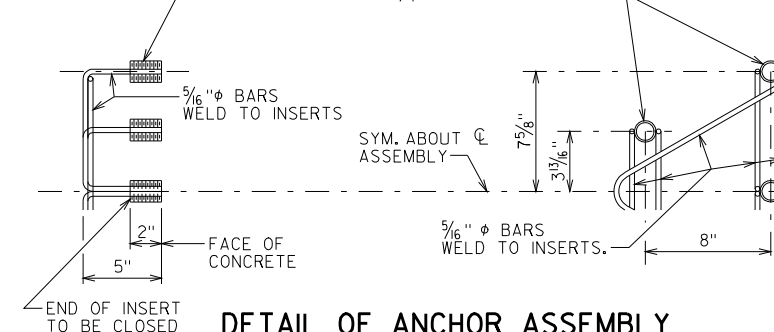
PLAN



OPTIONAL CONSTRUCTION JOINTS IN THE PARAPETS MAY BE USED. RUN BAR REINF. THRU THE JOINT. LAP LONGIT. BARS A MIN. OF 1'-9". MIN. JOINT SPACING OF 80'-0". DEFINE CONST. JOINT WITH A 3/4" 'V' GROOVE.



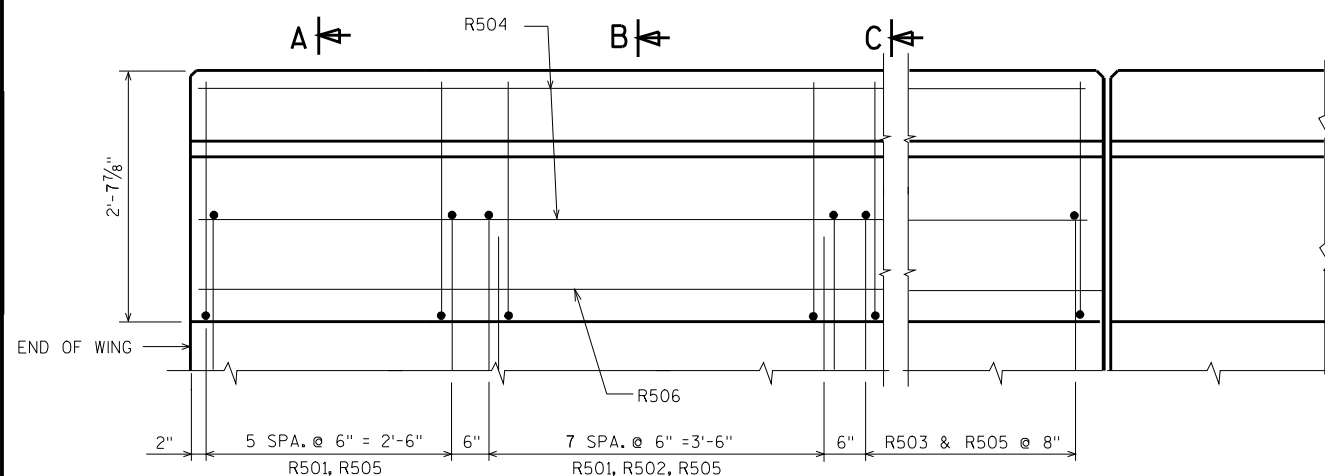
THREADED INSERTS FOR 7/8" φ X 2" LONG GALVANIZED HEX HEAD CAP SCREWS. CAP SCREWS TO BE THREADED A MIN. OF 1 1/8" AND SHALL BE SUPPLIED, INCLUDING WASHERS, WITH ASSEMBLY. INSERTS TO BE THREADED A MINIMUM OF 1 3/4".



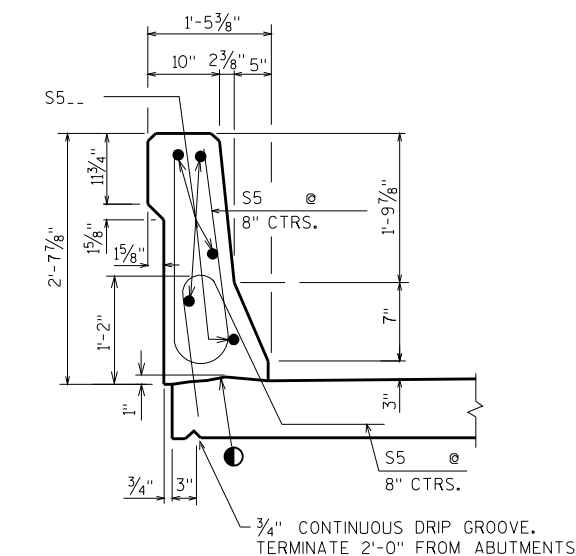
DETAIL OF ANCHOR ASSEMBLY

NOTE: HEX HEAD CAP SCREWS & WASHERS TO BE GALVANIZED IN ACCORDANCE WITH AASHTO M232 CLASS C.

ASSEMBLY SHALL BE BID ITEM "ANCHOR ASSEMBLIES FOR STEEL PLATE BEAM GUARD", EACH.



OUTSIDE ELEVATION



SECTION THRU PARAPET ON BRIDGE

● CONST. JOINT - STRIKE OFF AS SHOWN.

■ R502 BARS MAY BE PLACED AFTER CONCRETE IS POURED BUT BEFORE INITIAL SET HAS TAKEN PLACE. USE CARE TO PLACE R502 BARS CORRECTLY ALONG TRANSITION OF PARAPET.

▽ R501 AND R503 BARS TO BE TIED TO WING STEEL BEFORE WING IS POURED.

NO.	DATE	REVISION	BY
STATE OF WISCONSIN DEPARTMENT OF TRANSPORTATION STRUCTURES DESIGN SECTION			
DRAWN BY		PLANS CK'D.	
SLOPED FACE PARAPET LF		SHEET	