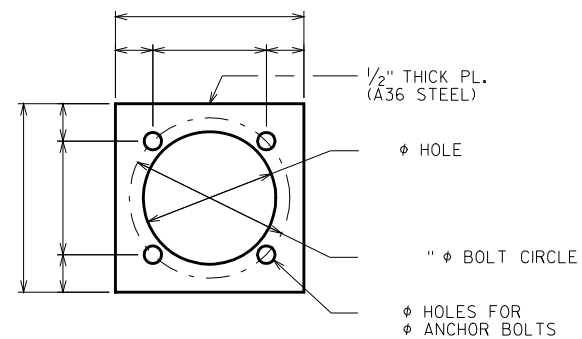
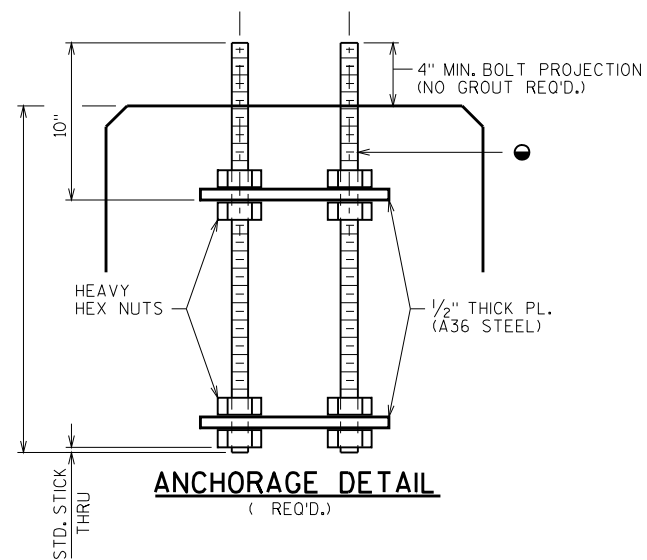


**SECTION A-A**

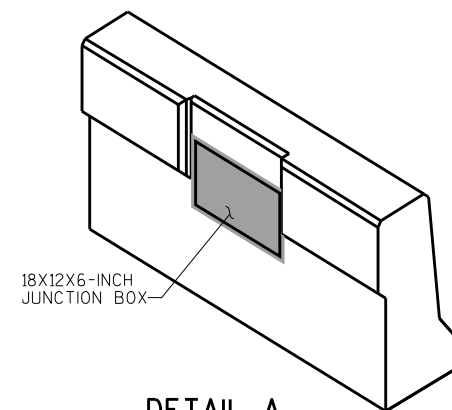
PARAPET SHALL NOT BE ANCHORED WITH EPOXY ANCHORS. REINFORCEMENT MUST BE CAST-IN-PLACE.



**PLATE DETAIL**  
(REQ'D.)



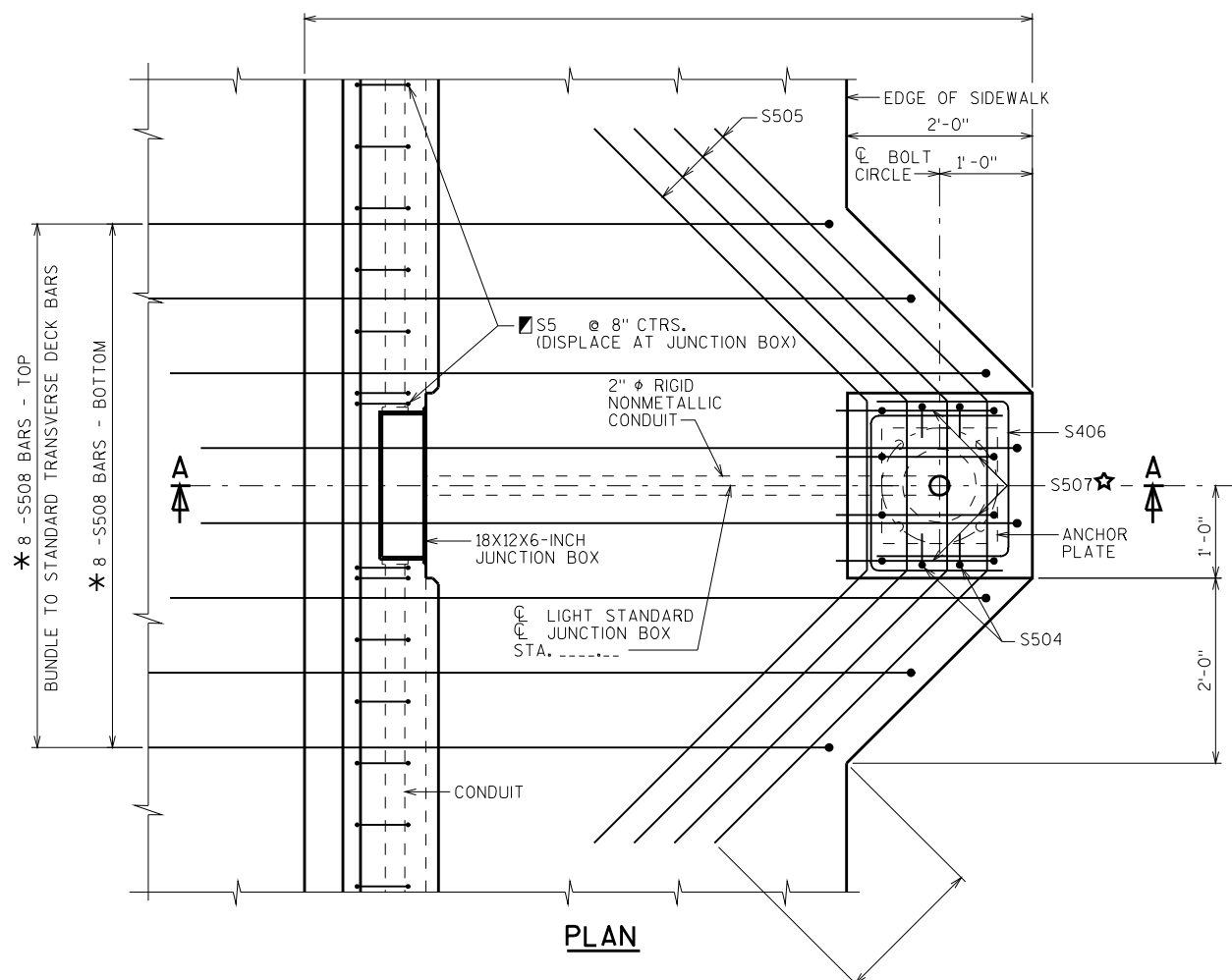
**ANCHORAGE DETAIL**  
(REQ'D.)



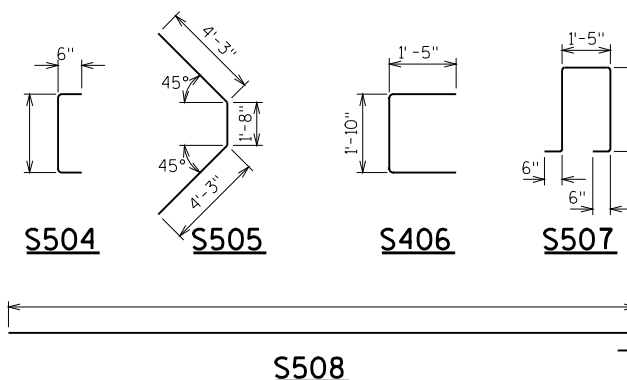
**DETAIL A**

SHOWING B.F. OF PARAPET WITH BLOCK OUT FOR JUNCTION BOX.

- CONSTR. JT. STRIKE OFF AS SHOWN
- ▲ CUT OUT ± 1" OF GASKET AT BOTTOM OF JUNCTION BOX COVER TO ALLOW FOR DRAINAGE.
- ▽ LOCATION OF CONDUIT IS MEASURED FROM OUTSIDE EDGE OF JUNCTION BOX.
- \* THESE BARS ARE IN ADDITION TO STANDARD TRANSVERSE BARS IN DECK.
- 1"φ THREADED ANCHOR BOLTS ASTM A449 OR AASHTO M 314-90 GR 55, HOT DIP ASTM A153, CLASS C, UPPER 8" OF BOLT INCLUDING NUTS & WASHERS. PROVIDE ENLARGED THREAD ON NUTS FOR PROPER FIT AFTER GALVANIZING. PROVIDE DOUBLE FLAT WASHERS & NUTS.
- ▣ SEE SLOPED FACE PARAPET "LF", SHT. FOR ADDITIONAL BAR STEEL DETAILS.
- ☆ TIE IN PLACE AFTER ANCHOR BOLT ASSEMBLY LOCATED.



**PLAN**



**BILL OF BARS**

BAR MARK	COAT	NO. REQ'D.	LENGTH	BENT	LOCATION
S504	X			X	LIGHT STD., VERT.
S505	X		10-2	X	LIGHT STD., HORIZ. IN DECK
S406	X		4-6	X	LIGHT STD., HORIZ.
S507	X			X	LIGHT STD., VERT.
S508	X			X	LIGHT STD., TRANSV. IN DECK

**NOTES**

BID ITEM SHALL BE:  
"ANCHOR ASSEMBLIES LIGHT POLES" EACH  
SEE SHT. FOR  
- ADDITIONAL NOTES  
- END OF BRIDGE DETAILS

NO.	DATE	REVISION	BY
STATE OF WISCONSIN DEPARTMENT OF TRANSPORTATION STRUCTURES DESIGN SECTION			
<b>STRUCTURE</b>		DRAWN BY	PLANS CK'D.
<b>LIGHTING DETAIL</b>		SHEET	