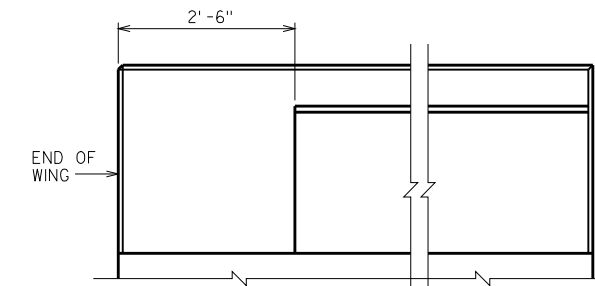
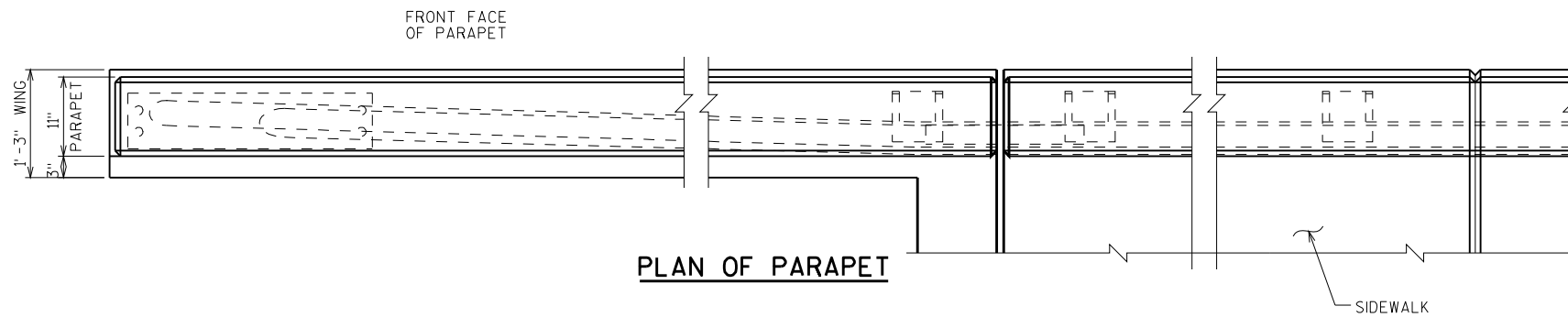


SECTION B-B
(SHOWING DEFLECTION JOINT IN PARAPET AND SIDEWALK.)

WHEN PARAPETS ARE POURED CONTINUOUSLY FROM END TO END, THEY SHALL BE SEPARATED AT THE DEFLECTION JOINTS BY A PIECE OF 1/8" ZINC OR PLASTIC PLATE CUT AS SHOWN IN SECTION B-B BY SHADED AREA. IF CONSTRUCTION JOINTS IN PARAPETS ARE USED AT THE DEFLECTION JOINTS, ONE SIDE OF JOINT SHALL BE COATED WITH AN APPROVED LIQUID BOND BREAKER AND PLATE SEPARATORS MAY BE OMITTED.



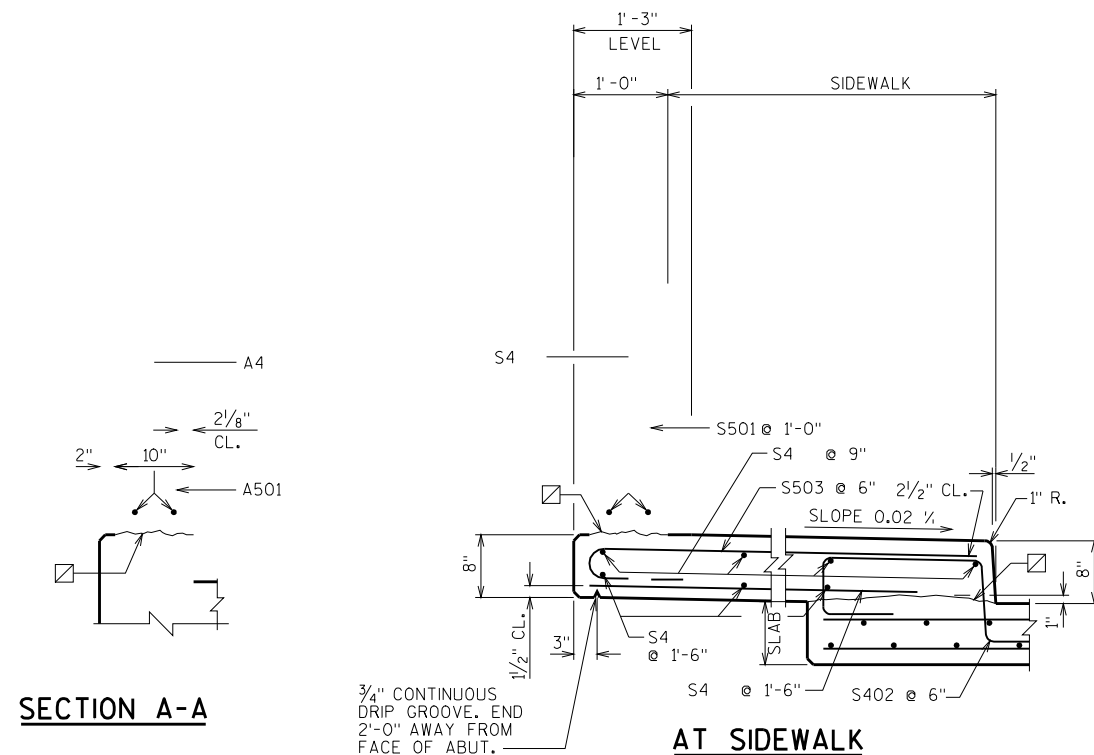
FRONT FACE OF PARAPET



PLAN OF PARAPET

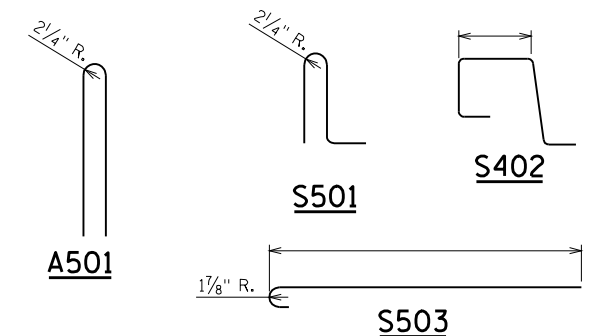
BILL OF BARS

BAR MARK	COAT	NO. REQ'D.	LENGTH	BENT	BAR SERIES	LOCATION
S501	X			X		PARAPET VERT.
S402	X			X		SIDEWALK VERT.
S503	X			X		SIDEWALK TRANSV.
A501	X			X		PARAPET VERT.



SECTION A-A

AT SIDEWALK



☐ HORIZ. CONST. JOINT - STRIKE OFF AS SHOWN AND LEAVE ROUGH.

NO.	DATE	REVISION	BY

STATE OF WISCONSIN
DEPARTMENT OF TRANSPORTATION
STRUCTURES DESIGN SECTION

STRUCTURE

DRAWN BY	PLANS CK'D.

VERTICAL FACE PARAPET "A"

SHEET