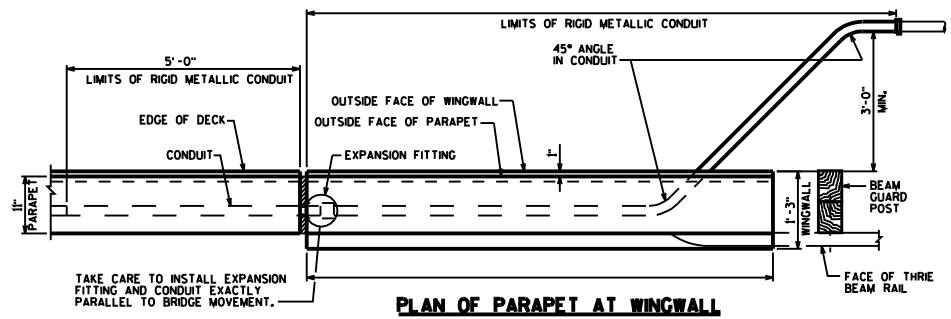


SECTION A-A



PLAN OF PARAPET AT WINGWALL

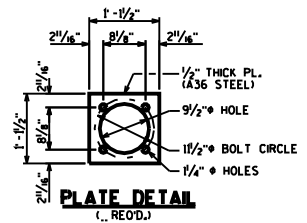
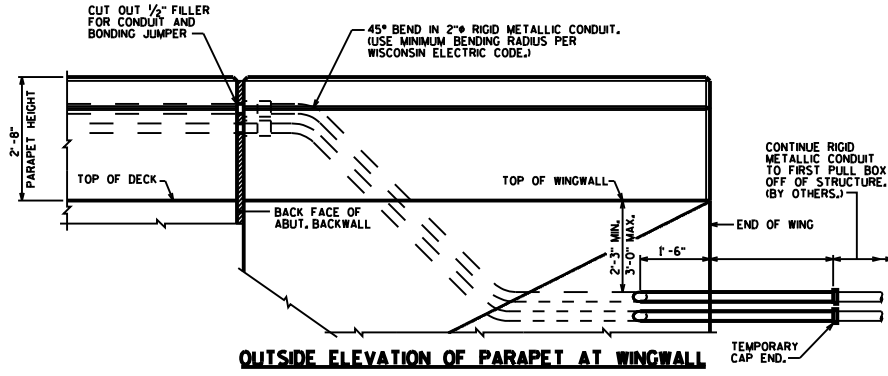
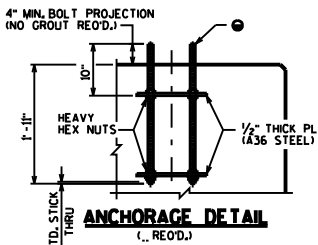


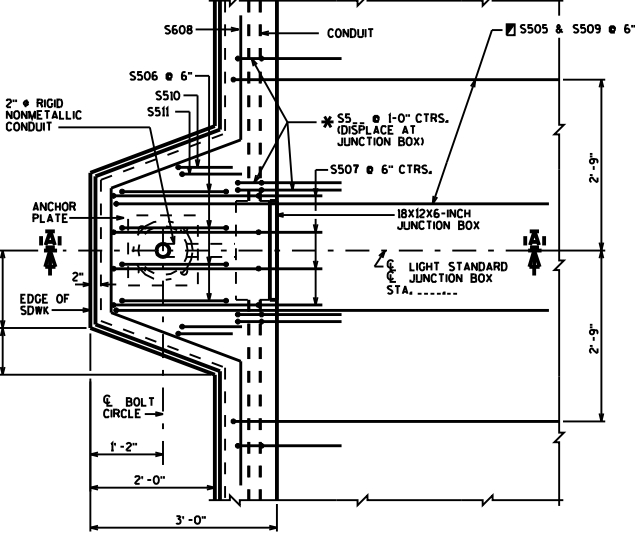
PLATE DETAIL
(, REOD.)



OUTSIDE ELEVATION OF PARAPET AT WINGWALL



ANCHORAGE DETAIL
(, REOD.)

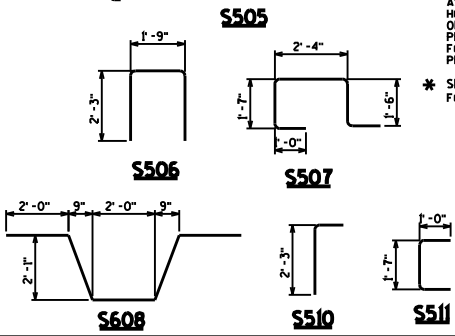


PLAN AT LIGHT STANDARD

- NOTES**
- ① CONSTR. JT. STRIKE OFF AS SHOWN
 - ▲ CUT OUT ± 1" OF GASKET AT BOTTOM OF JUNCTION BOX COVER TO ALLOW FOR DRAINAGE.
 - ▽ LOCATION OF CONDUIT IS MEASURED FROM OUTSIDE EDGE OF JUNCTION BOX.
 - THESE BARS ARE IN ADDITION TO STANDARD TRANSVERSE BARS IN SIDEWALK.
 - 1" THREADED ANCHOR BOLTS ASTM A449 OR AASHTO M 314-90 GR 55. HOT DIP ASTM A153, CLASS C, UPPER 8" OF BOLT INCLUDING NUTS & WASHERS. PROVIDE ENLARGED THREAD ON NUTS FOR PROPER FIT AFTER GALVANIZING. PROVIDE DOUBLE FLAT WASHERS & NUTS.
 - * SEE VERTICAL FACE PARAPET "A" SHT. ... FOR ADDITIONAL BAR STEEL DETAILS.
- BID ITEMS SHALL BE:
 "JUNCTION BOXES 18x12x6-INCH", EACH,
 "ANCHOR ASSEMBLIES LIGHT POLES", EACH,
 "CONDUIT RIGID NONMETALLIC SCHEDULE 40 2-INCH",
 "CONDUIT RIGID METALLIC 2-INCH".
- APPROVED MANUFACTURERS - JUNCTION BOXES:
 SEE APPROVED MATERIAL LIST.
- APPROVED MANUFACTURER OR EQUIVALENT - EXPANSION FITTING:
 0-Z/GEDNEY TYPE AX-200 AND BONDING JUMPER (4" TOTAL CONDUIT MOVEMENT).
- EXPANSION FITTINGS, ANGLES AND ADAPTER FITTINGS TO BE INCIDENTAL TO "CONDUIT RIGID METALLIC 2-INCH".
- WHEN CONNECTING NONMETALLIC CONDUIT TO METALLIC CONDUIT, ONLY ADAPTER FITTINGS U.L. LISTED FOR ELECTRICAL USE SHALL BE USED.

BILL OF BARS

BAR MARK	QTY	NO. REOD.	LENGTH	BY	LOCATION
S505	8			X	SIDEWALK_HORIZ.@_JUNCTION_BOX
S506	8		6'-0"	X	PARAPET_VERTI.@_JUNCTION_BOX
S507	8		6'-11"	X	PARAPET_VERTI.@_LIGHT_SID...
S608	8		10'-0"	X	PARAPET_HORIZ.@_LIGHT_SID...
S509	8			X	SIDEWALK_HORIZ.@_JUNCTION_BOX
S510	8		3'-2"	X	PARAPET_VERTI.@_LIGHT_SID...
S511	8		3'-5"	X	PARAPET_VERTI.@_LIGHT_SID...



8
15
78

8

NO.	DATE	REVISION	BY
STATE OF WISCONSIN DEPARTMENT OF TRANSPORTATION STRUCTURES DESIGN SECTION			
STRUCTURE			
DRAWN BY		PLANS Ckd.	
PARAPET "A" ELECTRICAL WORK		SHEET --	