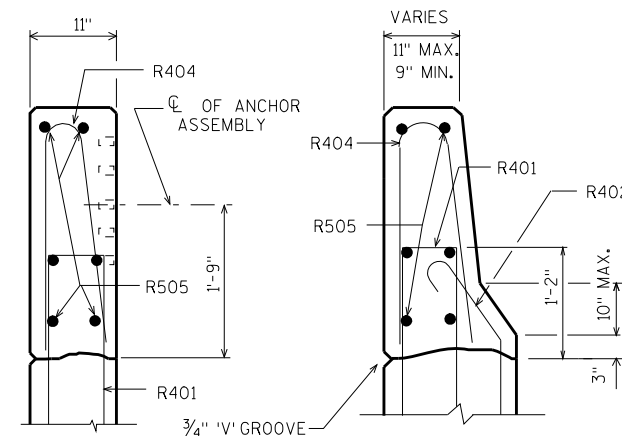
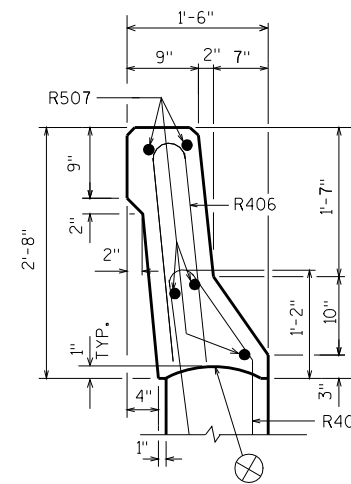


**INSIDE ELEVATION**



**SECTION A**

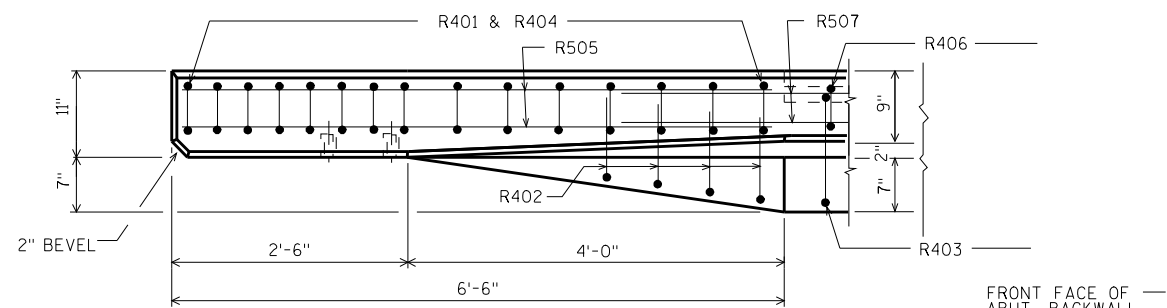
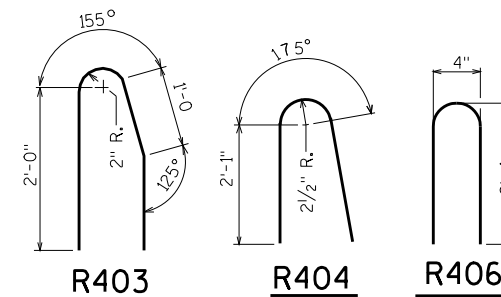
**SECTION B**



**SECTION C**

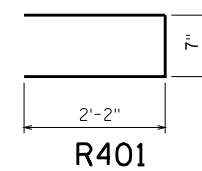
**BILL OF BARS**  
FOR ABUTMENT PARAPETS  
THE FIRST DIGIT OF THE BAR MARK SIGNIFIES THE BAR SIZE. EPOXY COAT ALL PARAPET REINF.

BAR MARK	NO. REO'D.		LENGTH	BENT	LOCATION
	ABUT.	ABUT.			
R401	30	30	4-9	X	WINGS STIRRUPS
R402	8	8	3-1	X	WINGS
R403			4-9	X	WINGS STIRRUPS
R404	30	30	4-9	X	WINGS
R505	12	12	6-2		WINGS
R406			4-10	X	WINGS
R507	10	10			WINGS

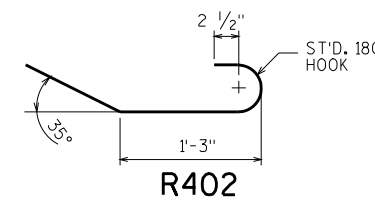


**PLAN**

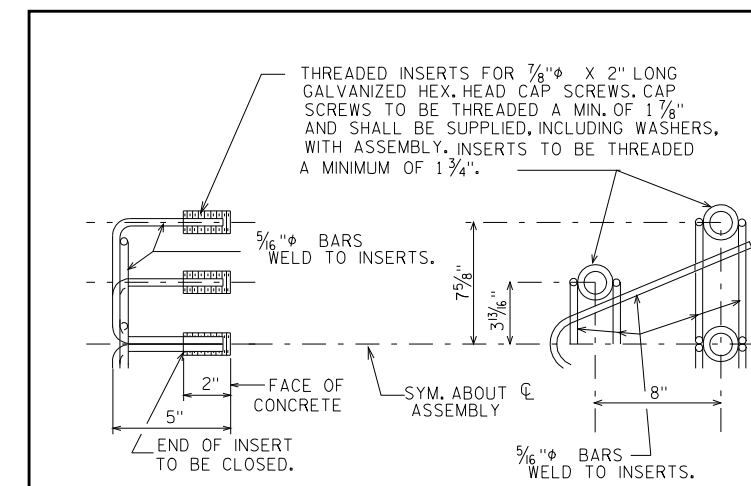
OPTIONAL CONSTRUCTION JOINTS IN THE PARAPETS MAY BE USED. RUN BAR REINF THRU THE JOINT. LAP LONGIT. BARS A MIN. OF 1'-9". MIN. JOINT SPACING OF 80'-0". DEFINE CONST. JOINT WITH A 1" 'V' GROOVE.



**R401**

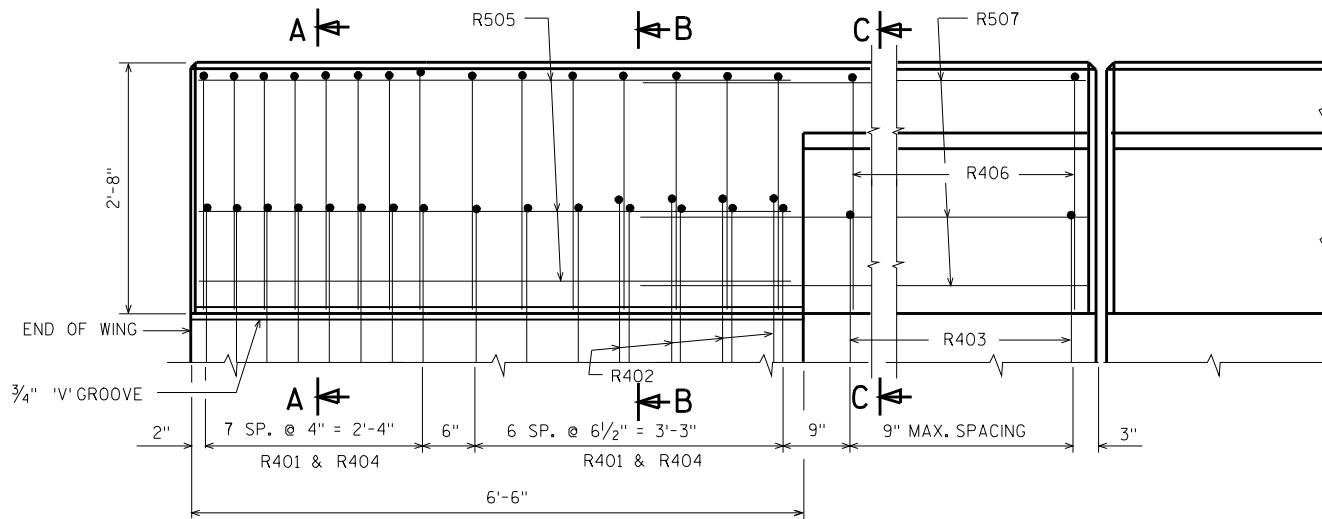


**R402**

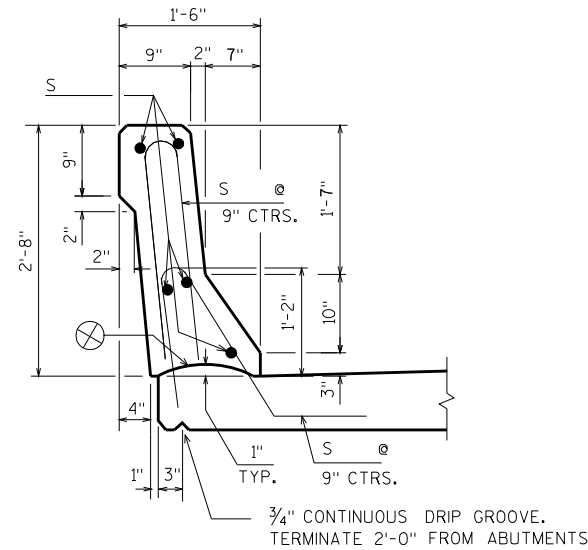


**DETAIL OF ANCHOR ASSEMBLY**

NOTE: HEX. HEAD CAP SCREWS & WASHERS TO BE GALVANIZED IN ACCORDANCE WITH AASHTO M232 CLASS C.



**OUTSIDE ELEVATION**



**SECTION THRU PARAPET ON BRIDGE**

CONST. JOINT - STRIKE OFF AS SHOWN.

NO.	DATE	REVISION	BY
STATE OF WISCONSIN DEPARTMENT OF TRANSPORTATION STRUCTURES DESIGN SECTION			
DRAWN BY		PLANS CK'D.	
SLOPED FACE PARAPET "B"		SHEET	