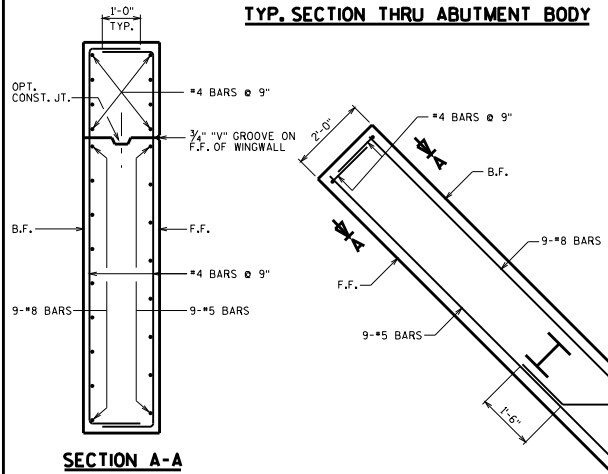
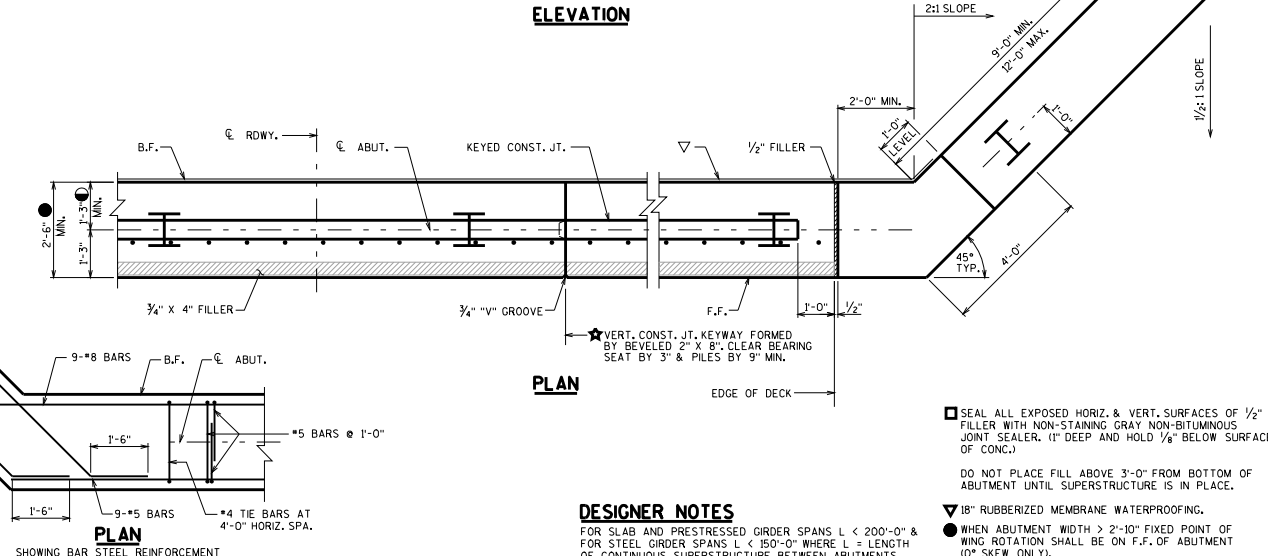


**TYP. SECTION THRU ABUTMENT BODY**

**ELEVATION**

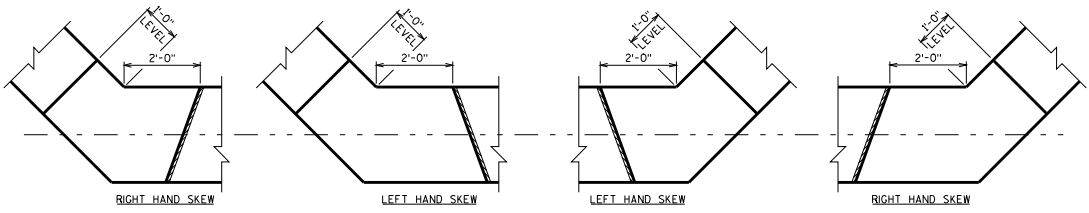


**SECTION A-A**



**PLAN**

**PLAN**



**WING DETAIL FOR SKEWED STRUCTURES**

SEAL ALL EXPOSED HORIZ. & VERT. SURFACES OF 1/2" FILLER WITH NON-STAINING GRAY NON-BITUMINOUS JOINT SEALER. (1" DEEP AND HOLD 1/8" BELOW SURFACE OF CONCR.)

DO NOT PLACE FILL ABOVE 3'-0" FROM BOTTOM OF ABUTMENT UNTIL SUPERSTRUCTURE IS IN PLACE.

**DESIGNER NOTES**

- ▽ 18" RUBBERIZED MEMBRANE WATERPROOFING.
  - WHEN ABUTMENT WIDTH > 2'-10" FIXED POINT OF WING ROTATION SHALL BE ON F.F. OF ABUTMENT (10° SKEW ONLY).
  - ◆ THESE BARS MAY BE PLACED AFTER CONCRETE IS POURED, BUT BEFORE INITIAL SET HAS TAKEN PLACE. SEE STD. 12.01 & 27.05.
  - ★ WHEN BODY SECTION IS > ± 50'-0" LONG, PROVIDE VERT. CONST. JOINT. RUN BAR STEEL THRU JOINT. BEVEL EXPOSED EDGES 3/4" AND SEAL JOINT. SEE STD. 12.09 FOR ALTERNATE CONSTRUCTION JOINT.
  - USE 1'-3" FOR ALL SLAB SPANS AND FOR GIRDER SPANS WITH NO PAVING NOTCH EXCEPT 45W, 54", 54W", 70", 72W" & 82W" GIRDERS WITH SKEWS > 25° - USE 1'-6". USE 1'-11" FOR GIRDER SPANS WITH PAVING NOTCH.
- ALL WING BARS SHALL BE EPOXY COATED.
- LAP LENGTH FOR HORIZONTAL BARS SHALL BE BASED ON A "CLASS C" TOP TENSION LAP SPLICE.

<b>ABUTMENT A5 (INTEGRAL, PILE ENCASED ABUTMENT)</b>	
STATE OF WISCONSIN DEPARTMENT OF TRANSPORTATION STRUCTURES DEVELOPMENT SECTION	
APPROVED: <b>Scot Becker</b>	DATE: 7-09