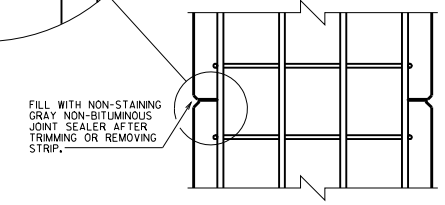
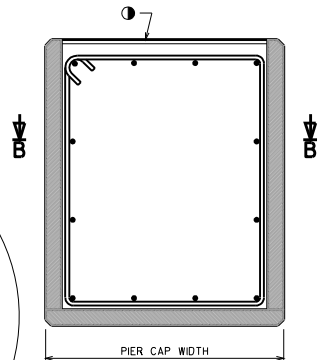
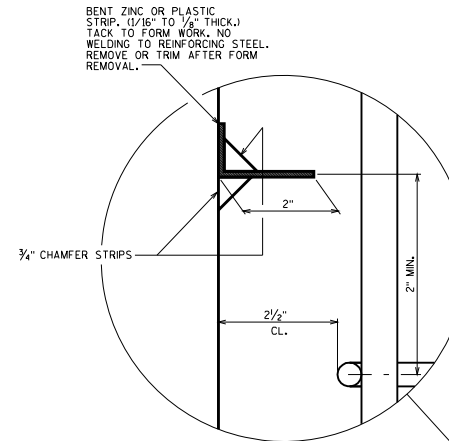
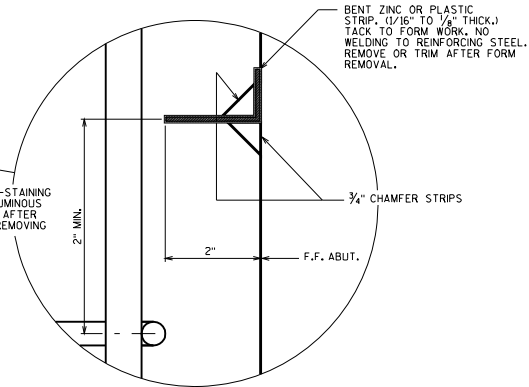


SECTION A-A
ALTERNATE CONSTRUCTION JOINT AT ABUTMENT



SECTION B-B
ALTERNATE CONSTRUCTION JOINT AT PIER CAP

- NOTES**
- PARTIAL ZINC OR PLASTIC BULKHEAD MAY BE USED AS ALTERNATE CONSTRUCTION JOINT, WITH THE PERMISSION OF THE ENGINEER, AT THE CONTRACTOR'S EXPENSE.
 - VERTICAL CONSTRUCTION JOINT KEYWAY IS NOT REQUIRED WHEN USING ALTERNATE CONSTRUCTION JOINT.
 - CARE IS TO BE USED IN CASTING CONCRETE AROUND BULKHEAD TO PREVENT DISLOCATION OR MISALIGNMENT OF THE BULKHEAD.
 - USE A JOINT TOOL TO CONSTRUCT A CONSTRUCTION JOINT APPROXIMATELY 1/2" DEEP.
 - BENT ZINC OR PLASTIC STRIP.

ALTERNATE CONSTRUCTION JOINT	
STATE OF WISCONSIN DEPARTMENT OF TRANSPORTATION STRUCTURES DEVELOPMENT SECTION	
APPROVED: Scot Becker	DATE: 7-08