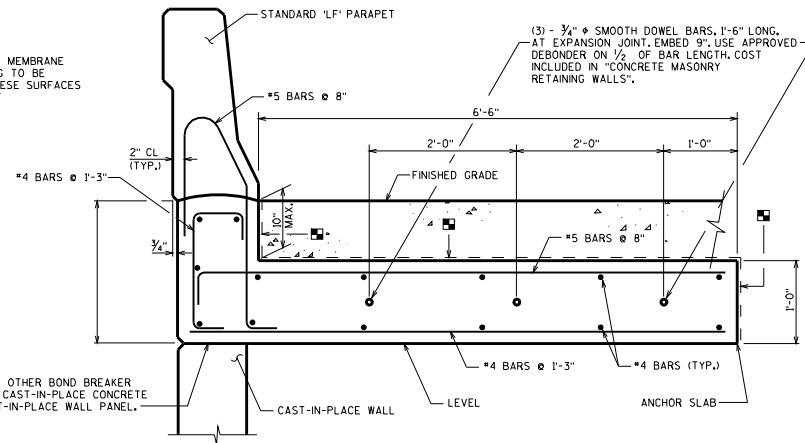


■ 18" RUBBERIZED MEMBRANE WATERPROOFING TO BE PLACED ON THESE SURFACES AT EACH JOINT



LIQUID OR OTHER BOND BREAKER BETWEEN CAST-IN-PLACE CONCRETE AND CAST-IN-PLACE WALL PANEL.

**CAST-IN-PLACE CONCRETE TRAFFIC BARRIER DETAIL FOR PRECAST WALL PANELS**

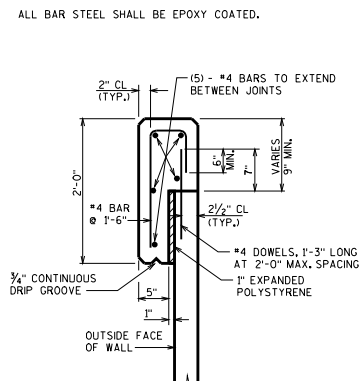
OPTIONAL CONSTRUCTION JOINTS IN THE PARAPET AND ANCHOR SLAB BETWEEN EXPANSION JOINTS MAY BE USED. RUN BAR REINFORCEMENT THRU THE JOINT. SEE STANDARDS 30.12 & 30.13 FOR MINIMUM LAP LENGTHS IN PARAPET BARS. DEFINE CONSTRUCTION JOINT WITH A 3/4" V-GROOVE.

LAP LONGITUDINAL #4 BARS A MINIMUM OF 1'-0". ALL BAR STEEL SHALL BE EPOXY COATED.

**CAST-IN-PLACE CONCRETE TRAFFIC BARRIER DETAIL FOR CAST-IN-PLACE WALL PANELS**

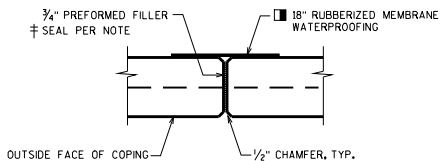
OPTIONAL CONSTRUCTION JOINTS IN THE PARAPET AND ANCHOR SLAB BETWEEN EXPANSION JOINTS MAY BE USED. RUN BAR REINFORCEMENT THRU THE JOINT. SEE STANDARDS 30.12 & 30.13 FOR MINIMUM LAP LENGTHS IN PARAPET BARS. DEFINE CONSTRUCTION JOINT WITH A 3/4" V-GROOVE.

LAP LONGITUDINAL #4 BARS A MINIMUM OF 1'-0". ALL BAR STEEL SHALL BE EPOXY COATED.



**CAST-IN-PLACE CONCRETE COPING DETAIL**

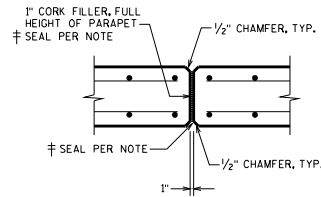
± SEAL ALL EXPOSED HORIZ. & VERT. SURFACES OF FILLER WITH NON-STAINING GRAY NON-BITUMINOUS JOINT SEALER. (1" DEEP AND HOLD 1/8" BELOW SURFACE OF CONC.)



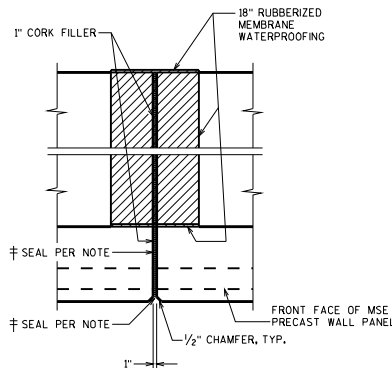
**COPING EXPANSION JOINT**

DO NOT RUN BAR STEEL THRU JOINT. MAX. SPACING OF JOINT = 50"

■ MEMBRANE WATERPROOFING TO EXTEND FROM TOP OF COPING TO 6" BELOW TOP OF PANELS.

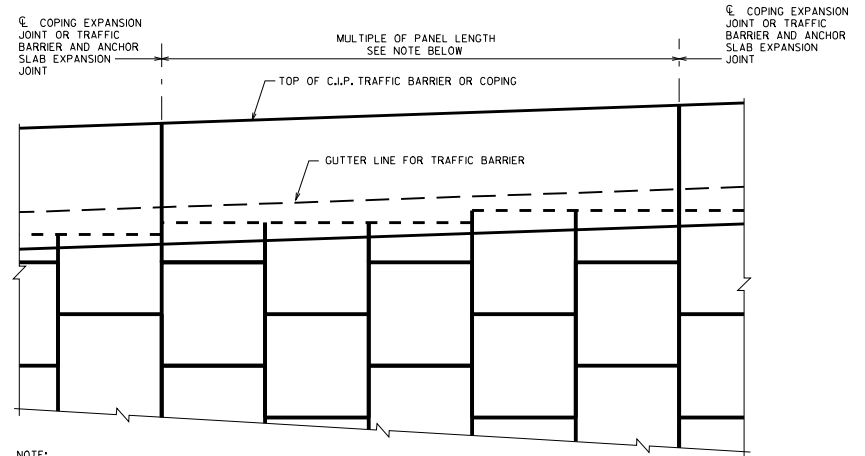


**TRAFFIC BARRIER EXPANSION JOINT DETAIL**



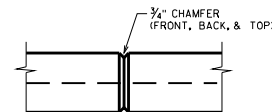
**ANCHOR SLAB EXPANSION JOINT DETAIL**

⊗ EXPANSION JOINTS TO BE SPACED AT A MINIMUM OF 20' AND A MAXIMUM OF 30'. LOCATE EXPANSION JOINTS OVER WALL JOINTS. DO NOT RUN BAR STEEL THRU JOINT, EXCEPT FOR DOWEL BARS. JOINT TO EXTEND FULL DEPTH OF PARAPET AND ANCHOR SLAB.



NOTE: ALL JOINTS SHALL BE LOCATED AS SHOWN ON WALL ELEVATIONS AND MUST COINCIDE WITH PANEL JOINT ON FRONT FACE.

**C.I.P. TRAFFIC BARRIER OR COPING PARTIAL ELEVATION**



**COPING CONTRACTION JOINT**

DO NOT RUN BAR STEEL THRU JOINT. MAX. SPACING OF JOINT = 12"

**MSE RETAINING WALL DETAILS**

STATE OF WISCONSIN  
DEPARTMENT OF TRANSPORTATION  
STRUCTURES DEVELOPMENT SECTION

APPROVED: Scot Becker

DATE:  
7-09