

SEE STD. 28.01 FOR STRIP SEAL EXPANSION JOINT DEVICE.
SEE STD. 28.03 FOR MODULAR JOINT EXPANSION JOINT DEVICE
AND ABUTMENT BACKWALL DETAILS.

CONCRETE DIAPHRAGM TO EXTEND BETWEEN
INSIDE FACES OF EXTERIOR GIRDERS FOR
STRIP SEALS. SEE STD. 28.03 FOR MODULAR
EXPANSION JOINTS.

*4 STIRRUPS @ 10" CTRS.
BETWEEN GIRDERS

CONST. JOINT
STRIKE OFF &
LEAVE ROUGH.

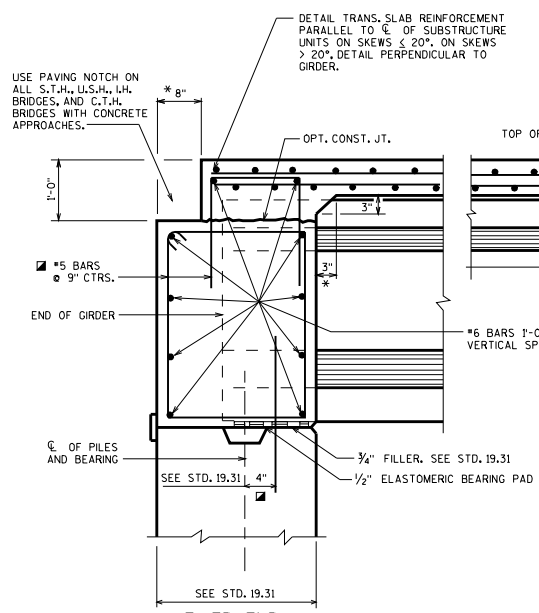
SEE TABLE

END OF GIRDER

F.F. OF ABUT.
BACKWALL

VARIES
STEEL & ELASTOMERIC BRGS.

FOR MIN. DIMENSION
SEE STD. 19.31



**FIXED END
FOR SKEWED AND SQUARE STRUCTURES**

DESIGN BAR STEEL FOR SPANS WITH GIRDER
CONTINUITY. USE #7 BARS x 16'-0" LONG
ON SPANS WITHOUT CONTINUITY. SPLICE TO
LONGITUDINAL BARS IN LONGER SPAN.

TOP OF SLAB

2 1/2" CL.

1 1/2" CL.

*5 BARS @ 1'-0" CTRS.

CL. OF BEARING

KEYED CONST. JOINT FORMED
BY BEVELED 2" x 6"
SEE DETAILS ON STD. 19.31

SYM. ABOUT CL. OF PIER

OPT. CONST. JT.

*4 BARS @ 1'-0" CTRS.

*4 BARS 1'-6" MAX.
VERTICAL SPACING

CONCRETE DIAPHRAGM TO EXTEND BETWEEN OUTSIDE
FACES OF EXTERIOR GIRDERS

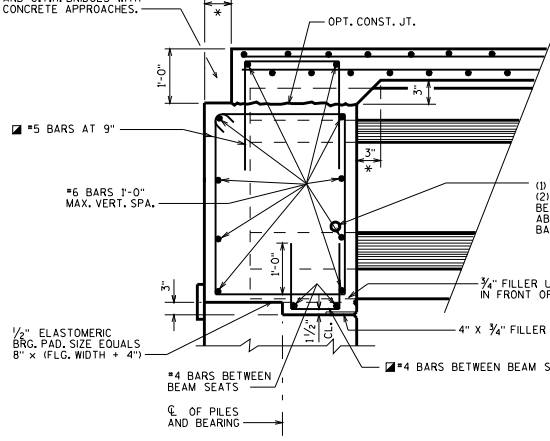
1/2" ELASTOMERIC BEARING
PAD AND 3/4" PREFORMED FILLER
FOR DETAILS SEE STD. 19.31

*5 BARS AT 1'-0" CENTERS X 2'-0" LONG
BETWEEN GIRDERS, EMBED 1'-0". PLACE
BARS BEFORE CONCRETE HAS TAKEN
INITIAL SET.

DIAPHRAGM AT 1/2" ELASTOMERIC BEARING

EXPANSION END

USE PAVING NOTCH ON ALL
S.T.H., U.S.H., I.H. BRIDGES,
AND C.T.H. BRIDGES WITH
CONCRETE APPROACHES.



**PRESTRESSED GIRDER WITH
SEMI-EXPANSION SEAT**

EXPANSION END DIAPHRAGM STEEL

DIAPHRAGM LENGTH (ALONG SKEW) BETWEEN GIRDERS (CL. TO CL. OF GRDS.)	NO. OF BARS & BAR SIZE	
	28"	36"
< 8'-4"	6 - #6	6 - #6
> 8'-4" < 11'-4"	6 - #8	6 - #7
> 11'-4" < 14'-9"		6 - #8

NOTES

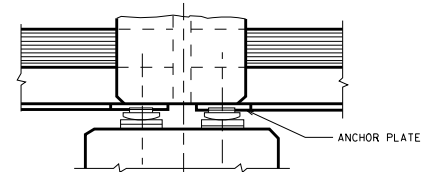
LAP LENGTHS FOR ALL BARS SHALL BE BASED
ON A "CLASS C" TENSION LAP SPLICE.
SEE STD. 24.12 FOR TEMPORARY BRACING REQUIREMENT.

LEGEND

THESE DIMENSIONS PARALLEL TO GIRDER
* DIMENSION IS TAKEN NORMAL TO CL. SUBSTRUCTURE UNITS.

SEE STANDARD 19.34 FOR 45W" PRETENSIONED GIRDERS,
SLAB AND SUPERSTRUCTURE DETAILS

SEE STANDARD 19.35 FOR 54W", 72W" & 82W" PRETENSIONED
GIRDERS, SLAB & SUPERSTRUCTURE DETAILS.



**DIAPHRAGM AT STEEL OR ELASTOMERIC BEARINGS
SECTION THRU HAUNCH AT PIER**

**28" & 36" PRESTRESSED GIRDERS
SLAB & SUPERSTRUCTURE DETAILS**

STATE OF WISCONSIN
DEPARTMENT OF TRANSPORTATION
STRUCTURES DEVELOPMENT SECTION

APPROVED: **Scot Becker** DATE:
1-09