

NOTES

ALL DIAPHRAGM MATERIAL NOT EMBEDDED IN THE CONCRETE GIRDER SHALL BE PAID FOR AT THE UNIT PRICE BID FOR "STEEL DIAPHRAGMS B--", EACH.

EACH DIAPHRAGM BETWEEN GIRDERS SHALL CONSTITUTE ONE UNIT.

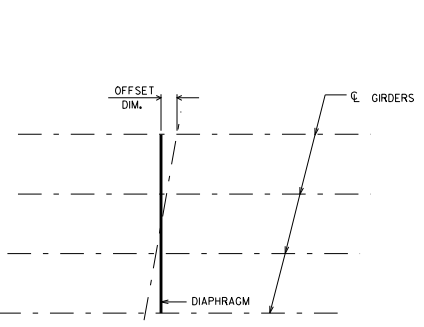
ALL DIAPHRAGM STRUCTURAL STEEL SHALL BE ASTM A709 GRADE 36. ALL BOLTS, NUTS AND WASHERS SHALL BE ASTM A325 TYPE 1.

ALL DIAPHRAGM STRUCTURAL STEEL SHOWN SHALL BE HOT-DIPPED GALVANIZED IN ACCORDANCE WITH ASTM A153 CLASS C. GALVANIZED NUTS SHALL BE TAPPED OVERSIZED IN ACCORDANCE WITH THE REQUIREMENTS OF ASTM A563 AND SHALL MEET THE REQUIREMENTS OF SUPPLEMENTARY REQUIREMENT S1 OF ASTM A563, LUBRICANT AND TEST FOR COATED NUTS.

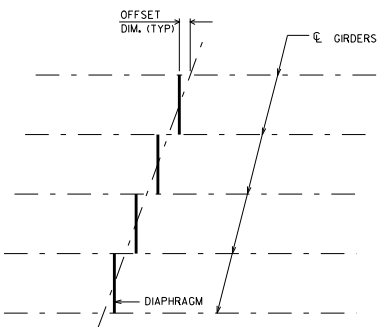
FOR SPANS EQUAL TO OR LESS THAN 80'-0" PLACE ONE DIAPHRAGM AT MID-LENGTH OF GIRDER. FOR SPANS OVER 80'-0" PLACE AT 1/3 AND 2/3 POINTS.

PART TRANSVERSE SECTION AT DIAPHRAGM

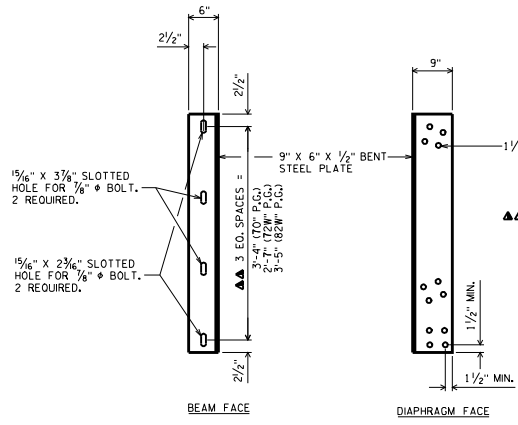
SECTION AT INTERIOR GIRDERS THRU DIAPHRAGM FOR SKEW ANGLES > 10°



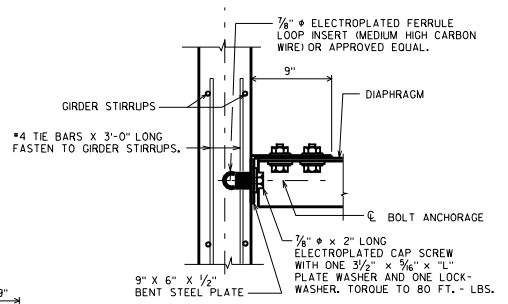
PLAN FOR SKEW ANGLES ≤ 10°



PLAN FOR SKEW ANGLES > 10°



DIAPHRAGM SUPPORT



SECT. A-A (FOR EXTERIOR ATTACHMENT)

"L" = 3/2" ; TOP & BOTTOM BOLTS
 "L" = 7" ; CENTER BOLTS

▲▲ BOLT HOLES SHALL BE SPACED SO AS TO MISS PRESTRESSED STRANDS IN CONCRETE BEAMS.

INTERMEDIATE STEEL DIAPHRAGMS FOR 70", 72" & 82" PRESTRESSED GIRDERS

STATE OF WISCONSIN
 DEPARTMENT OF TRANSPORTATION
 STRUCTURES DEVELOPMENT SECTION

APPROVED: **Scot Becker** DATE: 7-09