

SECTION THRU EXTERIOR GIRDER

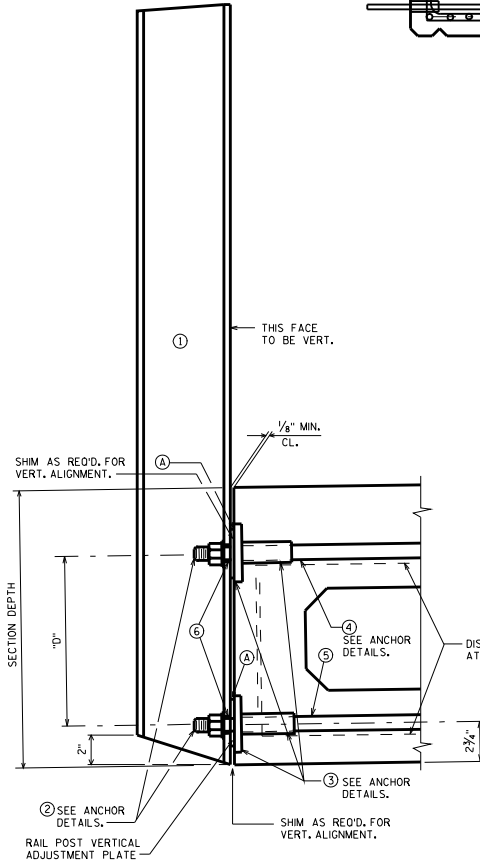
LEGEND

- ① W6 x 25. SEE STD. 30.1 OR 30.2 FOR RAILING ATTACHMENT. PLACE POSTS NORMAL TO GRADE LINE. PLACE POSTS VERTICAL.
 - ② 1" DIA. STUD WITH NUT & WASHER, FOUR REQ'D. PER POST, A325.*
 - ③ THREADED BAR COUPLER FOR 1" Ø STUD. ACCEPTABLE PRODUCTS ARE WILLIAMS REBAR FLANGE COUPLERS BY WILLIAMS FORM ENGINEERING CORP. OR DOWEL BAR REPLACEMENTS BY DAYTON SUPERIOR. FOUR REQ'D. PER POST. EXPOSED OPTIONAL FLANGE TO BE GALVANIZED.*
 - ④ ANCHOR BAR 1" DIA. THREADED REINFORCEMENT BAR BENT AS SHOWN IN ANCHOR DETAILS, GRADE 60. TWO REQ'D. PER POST. (TOP)**
 - ⑤ ANCHOR BAR, 1" DIA. THREADED REINFORCEMENT BAR (STRAIGHT), GRADE 60. TWO REQ'D. PER POST. (BOTTOM)**
 - ⑥ 1 1/2" x 1 3/4" SLOTTED HOLES IN POST FOR STUD NO. 2. LONG DIMENSION OF SLOTTED HOLE TO BE VERTICAL.
- *SHALL BE MECHANICALLY GALVANIZED OR ELECTRO-PLATED.
**NOT GALVANIZED OR ELECTRO-PLATED.

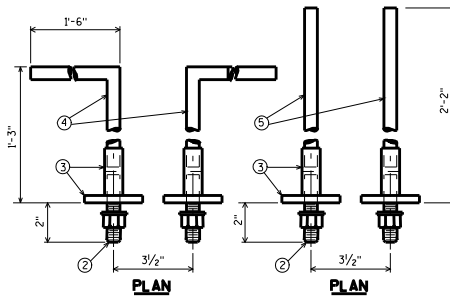
GENERAL NOTES

FILL BOLT SLOT OPENINGS IN POST SHIMS AND POSTS WITH NON-STAINING GRAY NON-BITUMINOUS JOINT SEALER.
STEEL POST SHIMS MAY BE USED AT POSTS WHERE REQ'D. FOR ALIGNMENT.

SECTION DEPTH	"D"
12"	7"
17"	12"
21"	16"
27"	22"
33"	28"
42"	37"

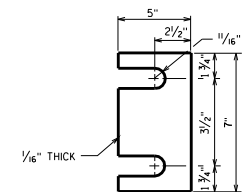


SECTION THRU RAILING

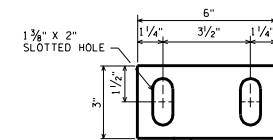


ANCHOR DETAILS

ANCHORS MAY BE FABRICATED IN A CAGE IF OPTED BY THE MFR.



**POST SHIM
DETAIL
(14 PER POST)**



**RAIL POST VERTICAL
ADJUSTMENT PLATE
(1 PER POST)**

(A) SEAL TOP & VERT. EDGES OF SHIMS, VERT. ADJUSTMENT PLATES, AND POST TO GIRDER CONTACT AREAS WITH NON-STAINING GRAY BITUMINOUS JOINT SEALER.

**PRESTRESSED SLAB AND
BOX GIRDER RAILING
POST ATTACHMENT**

STATE OF WISCONSIN
DEPARTMENT OF TRANSPORTATION
STRUCTURES DEVELOPMENT SECTION

APPROVED: **Scot Becker** DATE: 7-09