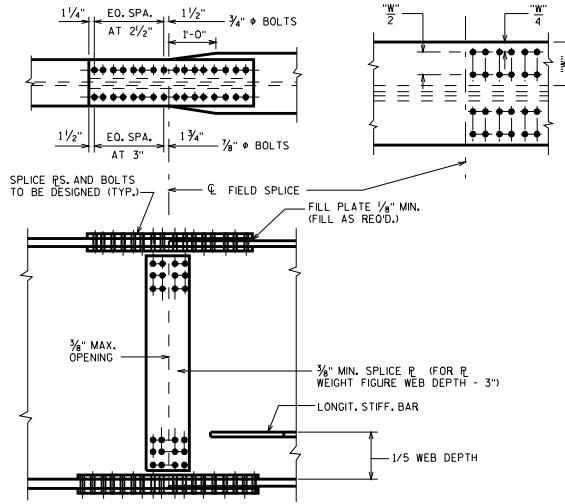


**PART GIRDER ELEVATION**

END OF GIRDER - INVESTIGATE THE POSSIBLE NEED OF CUTTING THE END OF GIRDER WEB VERT. ON STEEP GRADES. (PLACE BRG. STIFFENERS VERT. IF END OF GIRDER IS CUT VERT.) INT. STIFFENERS TO BE PLACED NORMAL TO TOP FLANGE.

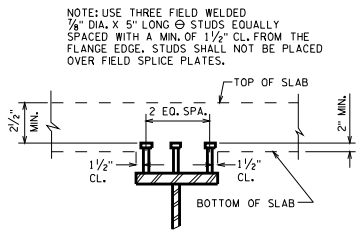


**FIELD SPlice DETAILS**

SEE STANDARD 24.07 FOR KINKED GIRDER DETAILS.

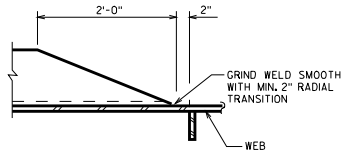
**NOTES**

- OPTIONAL WELDED SHOP SPICES MAY BE USED FOR ALL FLANGE AND WEB PLATES OVER 60'-0" LONG. IF USED, THE LOCATION OF THE SPICE SHALL BE SHOWN ON SHOP DRAWINGS AND WILL BE SUBJECT TO THE APPROVAL OF THE STRUCTURES DESIGN SECTION.
- OPTIONAL FLANGE BUTT SPICE, A FLANGE PLATE OF THE LARGER SIZE MAY BE FURNISHED FULL LENGTH, BUT PAY WEIGHT SHALL BE BASED ON SECTIONS AS DETAILED, IF A PERMANENT HOLD DOWN DEVICE IS USED AT THE ABUTMENT, THEN THE BUTT SPICE SHALL NOT BE OPTIONAL.
- (REMINDER - BASE BEARING SEAT ELEVATIONS AT ABUTMENT ON THICKER FLANGE AND DETAIL SHM PLATES TO ACCOMMODATE THINNER FLANGE.)
- AT EXTERIOR GIRDERS PLACE INTERMEDIATE TRANSVERSE STIFFENERS ON INTERIOR FACE OF GIRDER. PLACE LONGITUDINAL STIFFENERS ON THE OUTSIDE FACE.
- AT INTERIOR GIRDERS PLACE INTERMEDIATE TRANSVERSE STIFFENERS ON ONE SIDE OF GIRDER AND LONGITUDINAL STIFFENERS ON THE OPPOSITE SIDE OF GIRDER. KEEP INTERMEDIATE STIFFENERS ON ONE SIDE WHEN LONGITUDINAL STIFFENERS ARE NOT REQUIRED.
- AVOID USE OF LONGITUDINAL STIFFENERS IF PRACTICAL BY THICKENING WEB. WHERE LONGITUDINAL STIFFENERS ARE USED, RUN THEM CONTINUOUS WITHOUT BREAKS AT CONNECTION STIFFENERS.
- AT EXTERIOR GIRDER PLACE INTERMEDIATE STIFFENERS ALONG ENTIRE LENGTH OF GIRDER AT A MAX. SPACING EQUAL TO 1.5 X THE DEPTH OF WEB. SPACE EQUALLY BETWEEN DIAPHRAGM CONNECTION STIFFENER. THIS REQUIREMENT IS NECESSARY TO SUPPORT THE FALSEWORK FOR THE SLAB OVERHANG AND MAY BE DISREGARDED IF THE SLAB OVERHANG, MEASURED FROM  $\bar{C}$  WEB, IS 1'-6" OR LESS OR ANY OF THE FOLLOWING CRITERIA ARE SATISFIED:
  - ...WEB THICKNESS > 3/8" AND WEB DEPTH < 48"
  - ...WEB THICKNESS > 1/2" AND WEB DEPTH < 60"
  - ...WEB THICKNESS > 3/4" AND WEB DEPTH < 66"
- PRIOR TO STEEL BLAST, ALL FLAME CUT EDGES OF PLATES THAT ARE TO BE PAINTED SHALL BE GROUND OR PLANED TO REMOVE THE HARDENED SURFACE CAUSED BY THE FLAME.

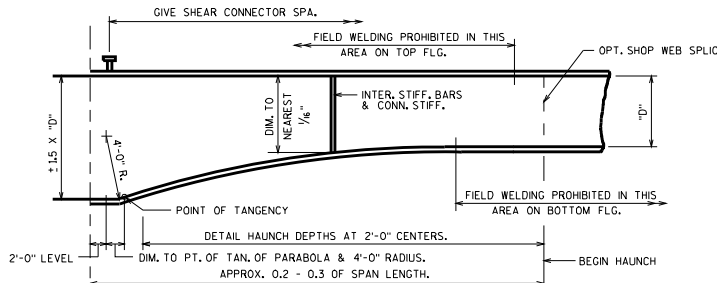


USE DIFFERENT LENGTH STUDS IF 2 1/2" MIN. CLEARANCE OR 2" EXTENSION CRITERIA IS VIOLATED.

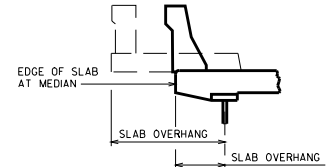
**SHEAR CONN. DETAILS**



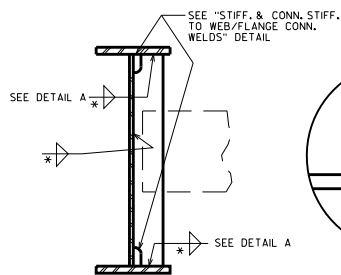
**LONGIT. STIFF. TERMINATION**



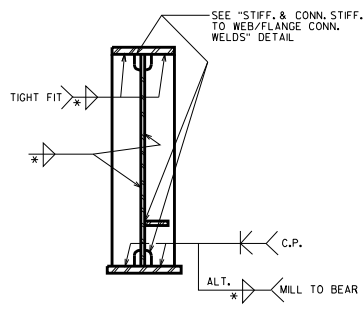
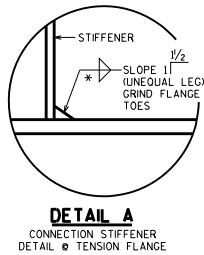
**PARABOLIC HAUNCH DETAILS**



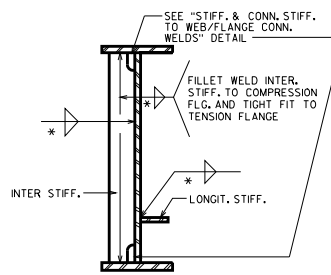
**SLAB OVERHANG DEFINITION**



**CONNECTION STIFF. DETAILS**



**BRG. STIFF. DETAILS TYP. AT ABUT. & PIER**

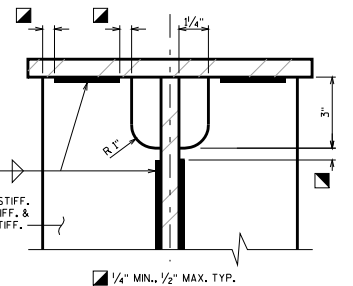


**INTERMEDIATE & LONGITUDINAL STIFF. DETAILS (ALL GIRDERS)**

**\* TABLE OF FILLET WELD SIZES**

MATERIAL THICKNESS OF THICKER PART JOINED	MIN. SIZE OF FILLET WELD
TO 1/2" INCLUSIVE	3/16"
OVER 1/2" TO 3/4"	1/4"
OVER 3/4" TO 1 1/2"	5/16"
OVER 1 1/2" TO 2 1/4"	3/8"
OVER 2 1/4" TO 6"	1/2"

EXCEPT THAT THE WELD SIZE SHALL NOT EXCEED THE THICKNESS OF THE THINNER PART JOINED.  
MIN. PASS SIZE IS 3/16"



**STIFF. & CONN. STIFF. TO WEB/FLANGE CONN. WELDS**

**PLATE GIRDER DETAILS**

STATE OF WISCONSIN  
DEPARTMENT OF TRANSPORTATION  
STRUCTURES DEVELOPMENT SECTION

APPROVED: **Scot Becker**

DATE:  
7-09