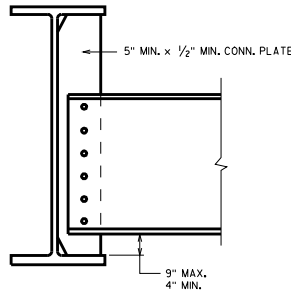


**36" W. GIRDER**



**33" W. GIRDER**

**INTERMEDIATE DIAPHRAGM SIZES**

ALL INTERMEDIATE CONNECTIONS	
GIRDER DEPTH	INTERMEDIATE DIAPHRAGMS
36"	MC18 X 42.7
33"	MC18 X 42.7
30"	C15 X 33.9
27"	C15 X 33.9
24"	C12 X 20.7
21"	C10 X 15.3
18"	C8 X 11.5

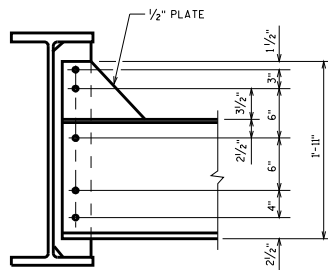
**NOTES**

DIAPHRAGMS SHALL BE HORIZONTAL EXCEPT WHEN THE DIFFERENCE IN ADJACENT GIRDER ELEVATIONS IS OF A MAGNITUDE THAT NECESSITATES SLOPING THE DIAPHRAGMS.

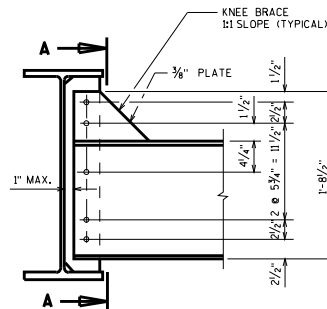
WHEN DIAPHRAGMS ARE SLOPED, PLACE CENTER OF DIAPHRAGM AT MID-DEPTH OF GIRDER.

ALL BOLTED CONNECTIONS SHALL BE MADE WITH 3/4"  $\phi$  HIGH STRENGTH ASTM A325 BOLTS.

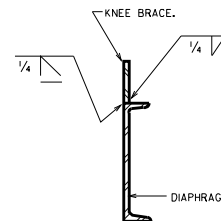
FOR CONNECTION BAR CORNER CLIPS & WELD DETAILS SEE "CONNECTION STIFFENER DETAILS" ON STD. 24.02



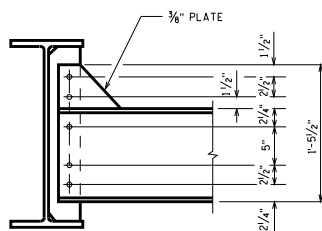
**30" W. GIRDER**



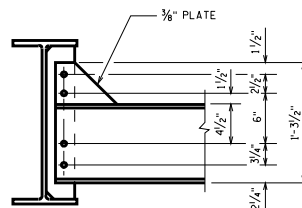
**27" W. GIRDER**



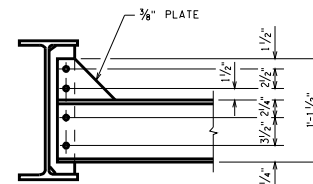
**SECTION A**



**24" W. GIRDER**



**21" W. GIRDER**



**18" W. GIRDER**

**ROLLED GIRDER DIAPHRAGMS**

STATE OF WISCONSIN  
DEPARTMENT OF TRANSPORTATION  
STRUCTURES DEVELOPMENT SECTION

APPROVED: Scot Becker

DATE:  
7-08