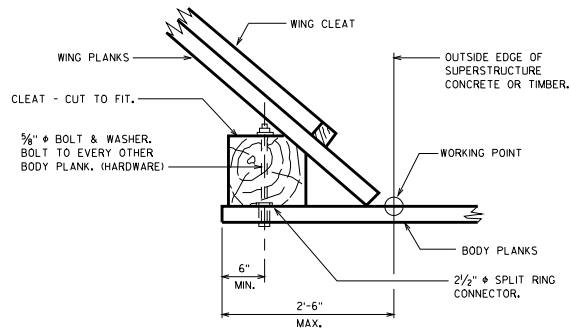


PLAN



CORNER DETAIL

NOTES

- ALL TIMBER CONNECTORS AND HARDWARE EXCEPT THOSE OF MALLEABLE IRON SHALL BE GALVANIZED.
- TREAT ALL LUMBER AND TIMBER WITH ONE OF THE PRESERVATIVES RECOMMENDED IN THE STANDARD SPECIFICATIONS.
- TIE RODS SHALL BE COATED WITH THE COAL TAR OR BITUMASTIC COMPOUND USED FOR COVERING WING PILE ENDS.
- REFER TO AASHTO LRFD SPECIFICATIONS FOR LUMBER AND TIMBER DESIGN REQUIREMENTS.
- THE BODY BACKING PLANKS SHALL BE CONTINUOUS OVER 4 PILES (3 PANELS). PLANK SPLICES, IF REQUIRED SHALL BE AT THE CENTERLINE OF PILING AND ADJACENT SPLICES SHALL BE STAGGERED.
- ALL TIE RODS, TURNBUCKLES, NUTS AND WASHERS SHALL BE PAID FOR AS "STRUCTURAL STEEL CARBON".
- TIMBER CONNECTORS AND HARDWARE SHALL BE INCLUDED IN THE COST FOR "TREATED LUMBER AND TIMBER".
- ALTERNATE DETAILS MAY BE SUBMITTED USING EITHER GALVANIZED STEEL BRIDGE PLANK OR PRECAST CONCRETE PLANK IN LIEU OF TIMBER BACKED ABUTMENT PLANKING, SUBJECT TO APPROVAL BY THE ENGINEER.

SKEW ANGLE	"H" HEIGHT FROM STREAM BED OR BERM TO GRADE	WING ANGLE "A"	WING ANGLE "B"
0° TO 15° INCL.	H ≤ 10'-0"	45°	45°
0° TO 15° INCL.	* H > 10'-0"	50°	50°
15° TO 20° INCL.	H ≤ 10'-0"	55°	30°
15° TO 20° INCL.	* H > 10'-0"	50°	50°
OVER 20°	H ≤ 10'-0"	65°	25°
OVER 20°	● H > 10'-0"	65°	25°

- * USE TIE RODS ON WING PILING
- USE TIE RODS WITH A DEADMAN ON WING PILING.

SECTION	MOMENT CAPACITY (INCH - KIPS/FT.)
10 GAGE (6' x 2') GRADE A * ARMCO	22.9 (f _b = 18 K.S.I.)
7 GAGE (6' x 2') GRADE A * ARMCO	30.0 (f _b = 18 K.S.I.)

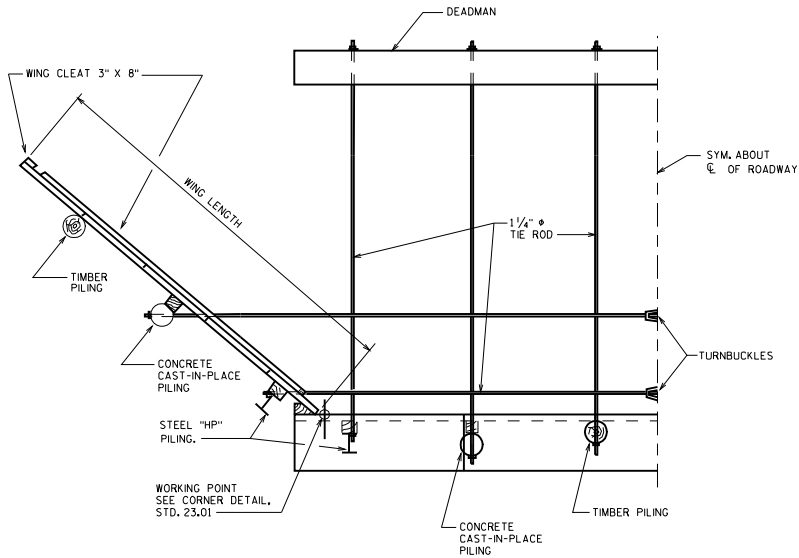
*ASTM A446

**TIMBER ABUTMENTS
GENERAL**

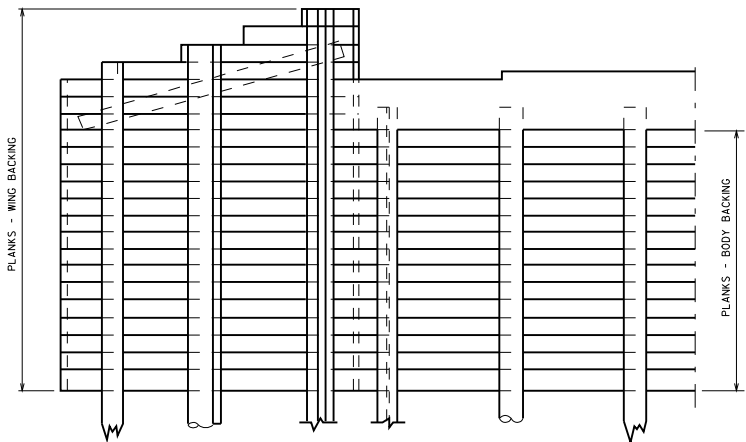
STATE OF WISCONSIN
DEPARTMENT OF TRANSPORTATION
STRUCTURES DEVELOPMENT SECTION

APPROVED: Scot Becker

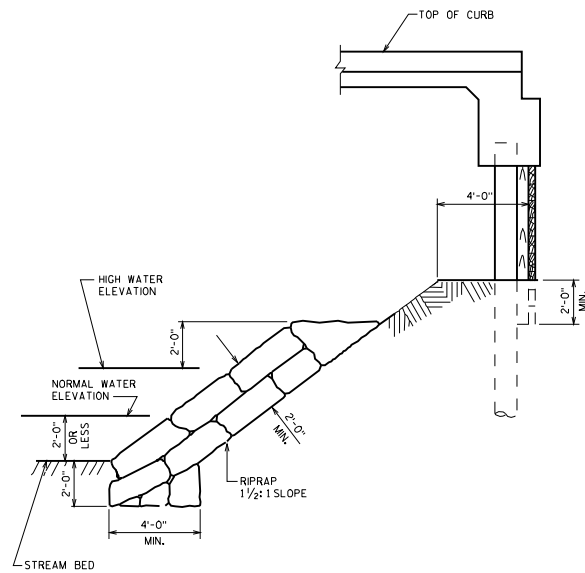
DATE:
7-08



HALF PLAN

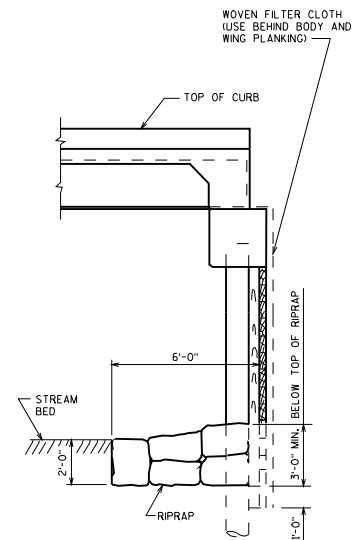


HALF ELEVATION



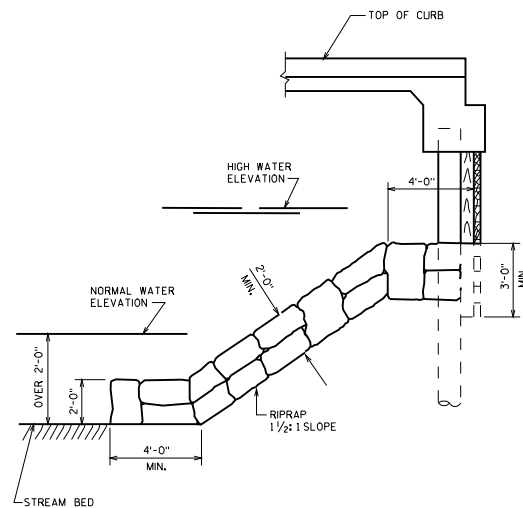
LONGITUDINAL SECTION WITH BERM

SHOWING TOE OF RIPRAP WHEN WATER IS 2'-0" OR LESS IN DEPTH.



LONGITUDINAL SECTION

WITHOUT BERM



LONGITUDINAL SECTION WITH BERM

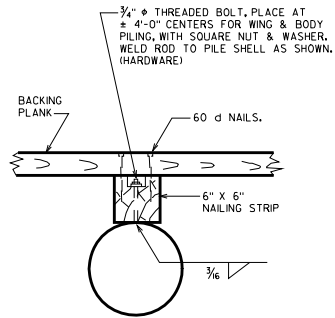
SHOWING TOE OF RIPRAP WHEN WATER IS OVER 2'-0" IN DEPTH.

TIMBER ABUTMENT

STATE OF WISCONSIN
DEPARTMENT OF TRANSPORTATION
STRUCTURES DEVELOPMENT SECTION

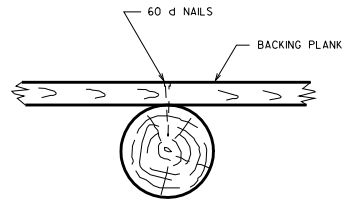
APPROVED: *Scot Becker*

DATE:
7-08

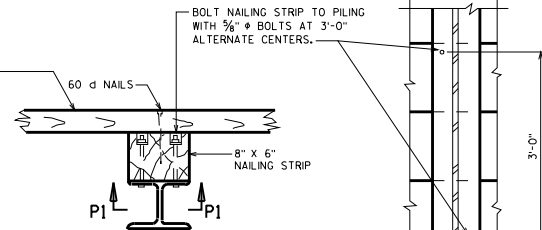


**CONCRETE
CAST-IN-PLACE PILING**

REFER TO STANDARD 11.01 FOR SECTION THRU REINFORCED CAST-IN-PLACE PILING WHEN PILES ARE EXPOSED.

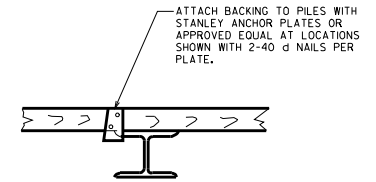


TIMBER PILING



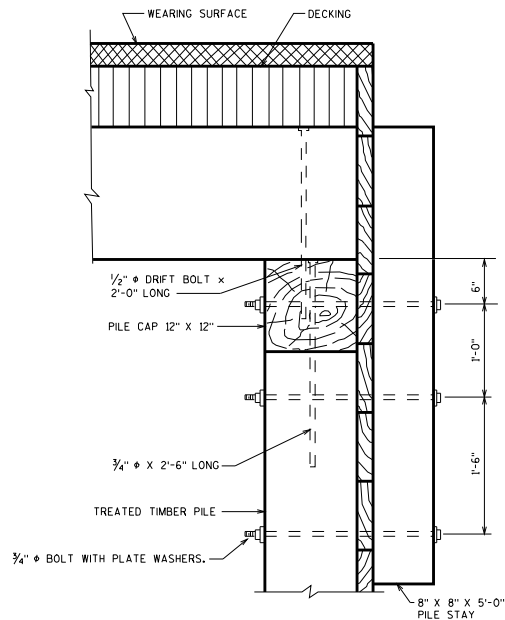
STEEL 'HP' PILING

SECTION P1



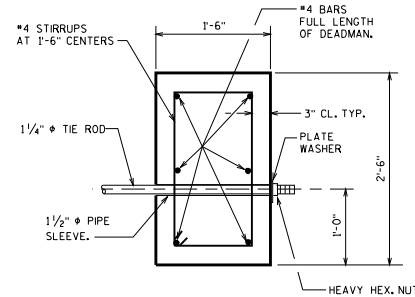
**STEEL 'HP' PILING
(ALTERNATE ATTACHMENT)**

BODY & WING PLANK CONNECTION DETAILS



PILE CAP DETAIL

(TIMBER GIRDER)



SECTION THRU DEADMAN

**TIMBER ABUTMENT
DETAILS**

STATE OF WISCONSIN
DEPARTMENT OF TRANSPORTATION
STRUCTURES DEVELOPMENT SECTION

APPROVED: Scot Becker

DATE:
7-08