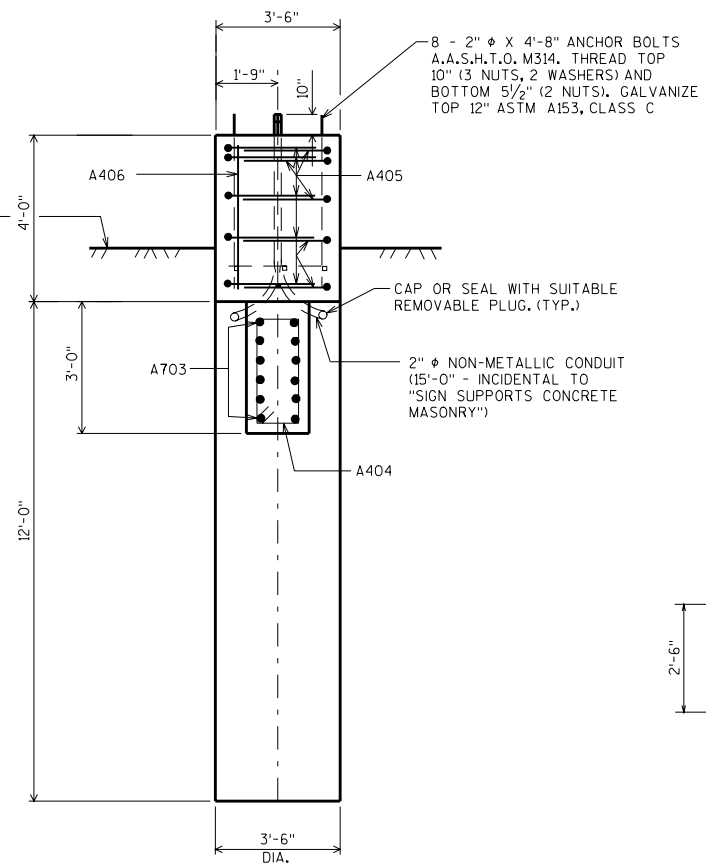
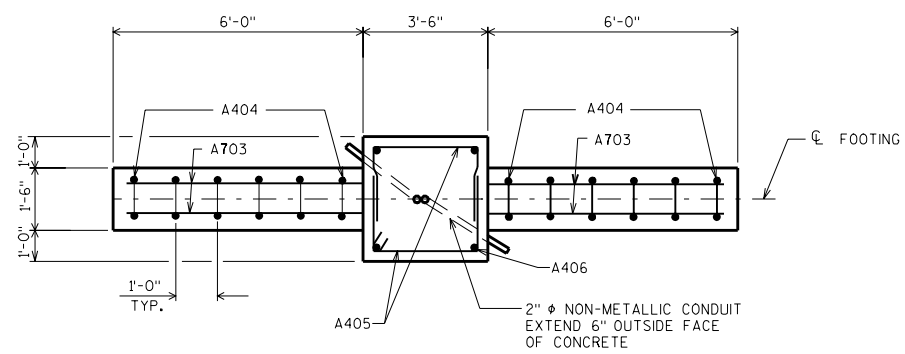


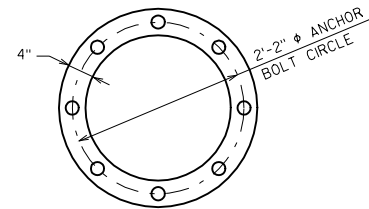
**ELEVATION**  
(8 C.Y.)



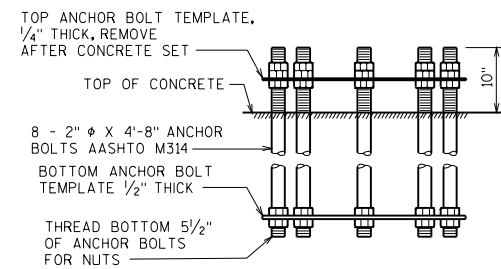
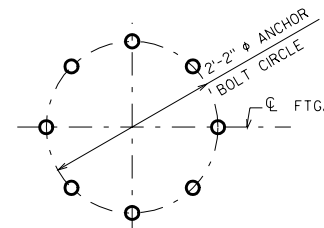
**SECTION B**



**PLAN**



**TOP VIEW OF TOP & BOTTOM TEMPLATES**



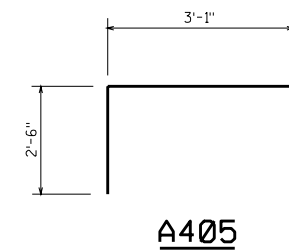
**ANCHOR BOLT DETAILS**

NOTE:  
THE FIRST OR FIRST TWO DIGITS OF A  
BAR MARK SIGNIFIES THE BAR SIZE.

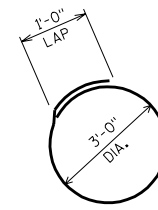
**BILL OF BARS**

980 LB.

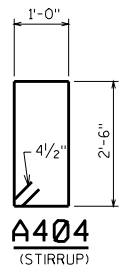
BAR MARK	COAT	NO. REQ'D	LENGTH	BENT	CUT. DIAG.	BUN-DLE	LOCATION
A701		12	15'-6"				FOOTING - COLUMN/TOP
A402		16	10'-6"	X			FOOTING - COLUMN/TOP
A703		12	15'-0"				FOOTING - WINGS
A404		12	7'-6"	X			FOOTING - WINGS
A405		10	7'-11"	X			FOOTING - TOP
A406		4	3'-6"				FOOTING - TOP - COLUMNS



**A405**



**A402**



**A404**  
(STIRRUP)

**GENERAL NOTES**

DRAWINGS SHALL NOT BE SCALED.  
BAR STEEL REINFORCEMENT SHALL  
BE EMBEDDED 3" CLEAR UNLESS  
DETAILED OTHERWISE.

**ALLOWABLE DESIGN STRESSES**

CONCRETE MASONRY  $f'_c=3,500$  P.S.I.  
HIGH STRENGTH BAR STEEL REINFORCEMENT,  $f_y=60,000$  P.S.I.  
ANCHOR BOLTS A.A.S.H.T.O. M314 GRADE 60  $f_y=55,000$  P.S.I.

**FOUNDATION DATA**

ALLOWABLE SOIL BEARING PRESSURE = 2T/SO. FT.

**TOTAL ESTIMATED QUANTITIES (1 FTG.)**

SIGN SUPPORTS CONCRETE MASONRY 8 C.Y.  
SIGN SUPPORTS STEEL REINFORCEMENT HS 980 LB.

**CANTILEVER  
TRUSS FOOTING**

STATE OF WISCONSIN  
DEPARTMENT OF TRANSPORTATION  
STRUCTURES DEVELOPMENT SECTION

APPROVED: \_\_\_\_\_

DATE:  
11-05